



Scuttlebutt

August 2015

Issue 232

Next Meeting: Saturday: August 22th – 1:00 – 5:00 pm
Federal Room – Holiday Inn
242 Adams Place, Boxborough, Massachusetts

Captain's Cabin

Tony Brock-Fisher, K1KP

Summer!

Ahhh, Summer! This summer seems very low key compared to last year, with WRTC2014 and the ARRL 100th Convention now fond memories. It's the season to keep busy working on new antenna projects and maintenance. Although the gain/cold temperature factor is low, its great to be outdoors working on all things ham, while thoughts of the upcoming contest season provide the incentive for bigger and better skyhooks. Just remember to plan your projects carefully and keep safety as the number one goal.

Now's the time to get out there and check everything. Despite the old adages, it is much more pleasant to replace a bad connector in warm weather than cold! And while it may be too soon for members of the Procrastinator's Club, now's a great time to plan and put up a few extra antennas, like a low dipole for Sweepstakes, or a south-facing fixed tribander for the Caribbean. If you have more than one antenna for a band, one of them will be better than the other – and better is better!

From this goal...

Well, the results are out for the ARRL DDX Contest, and yes, FRC nipped us by 4.5M points, or 1.8%. This turned out to be a little more than a 'moderate single op score', but certainly not more than a single 'Big Gun' single op score in either mode. Kudos to the testers to our south. While I don't enjoy losing, I do respect an opponent that provides good competition. This means we have our work cut out for us next spring (and this fall too).

This all raises the question of 'Why are we here'? Really – why does it make sense for a bunch of testers in 1-land to write our scores on one piece of paper, and another bunch of testers in 3-land to write their scores on another piece of paper, and call it a competition? What does it really prove? By itself, probably nothing! We have one, simple, stated goal:

“Club members shall be encouraged to participate in all amateur radio contests, with particular emphasis given to the American Radio Relay League Sweepstakes, DX contests, and Field Day, and the CQ WW DX contests and WPX contest. “

From that singular goal, flow all the other great things about this club. This one line from our constitution forms the basis for all the other good things we do. From this goal flow six meetings per year, with great technical and operating presentations. From this goal comes a newsletter that you are reading now. From this goal was created a reflector which allows us to seek and provide technical information on ham radio of the highest quality. From these communications tools, is forged a bond amongst ham radio operators in our local region that can't be made any other way. From this goal was created some of the most innovative communications software, for contest logging and packet networks. From this goal comes a scholarship that funds one deserving young ham's college career each year. And yes, from this goal, comes Contest Universities, the Contest Cookbook, and even the 11pm Pizza Party on the Saturday night of Dayton Weekend.

(Continued on page 8)

Yankee Clipper Contest Club	
President	Tony Brock Fisher, K1KP President@YCCC.org
Vice President	Dennis Egan, W1UE VicePresident@YCCC.org
Activities Manager	Jim Ussailis, W1EQO 413-585-8645 W1EQO@Shavsnets.com
Secretary	Brian Szewczyk, NJ1F Secretary@YCCC.org
Treasurer	Chet Slabinski, N8RA Treasurer@YCCC.org
Scuttlebutt Editor	Steve Rodowicz, N1SR (413) 593-6554 Editor@YCCC.org
Scuttlebutt Publisher	Will Liporace, WC2L Publisher@YCCC.org
Webmaster	Lyn Glasgow, WB1CCL wblccl@gmail.com
Scorekeeper	Alec Berman, W2JU Scores@YCCC.org
W1 QSL Bureau Manager	Eric Williams, KV1J Dennis Egan, W1UE W1QSL@YCCC.ORG
Technical Assistance Manager	Dave Jordan, K1NQ YCCCTA@YCCC.ORG
New Members	Mark Pride, K1RX (603) 778-1222
Media Manager	Tom LeClerc, W1TJL W1TJL@arrl.net

Ship's Log	August 2015	Issue 232
Captain's Cabin	Tony Brock Fisher - K1KP	1,8
Directions to Meeting		2
Linear Power Supply Troubleshooting	Jim Ussailis-W1EQO	3
YCCC Resources		10

DIRECTIONS to YCCC August Meeting:

Holiday Inn
242 Adams Place
Boxborough, Massachusetts 01719
Saturday, August 22, 2015
1:00 – 5:00 pm

From the South, East and West: Take the Massachusetts Turnpike, (Interstate 90) to Interstate 495 North. Take Exit 28 (Route 111). Turn left at traffic light. hotel driveway is on the right (Adams Place).

From the North: Take Interstate 93 South, Merge onto Interstate 495 South. Take Exit 28, Merge onto Route 111 towards Boxborough. Hotel driveway will be after the first light on the right, onto Adams Place.

-. - - / - . . . / - . . . / - . . .

Area Managers

ME	Mike Russo, K1EU	(207) 883-9524	k1eu@maine.rr.com
ENH/NEMA	Jerry Muller, K0TV	-----	k0tv@arrl.net
WNH/SVT	Craig Clark, K1QX	-----	k1qx@arrl.net
SE MA (508)	Eric Williams, KV1J	-----	kv1j@arrl.net
Boston (617/781)	Joe Fitzgerald, KM1P	(617) 325-6767	jfitzgerald@alum.wpi.edu
WMA (413)	Tom Homewood, W1TO	(413) 743-7342	w1to@arrl.net
CT (860)	Rich Cady, N1IXF	-----	n1ixf@arrl.net
CT (203)	Mike Loukides, W1JQ	(203) 458-2545	MikeL@oreilly.com
RI (401)	Nat Henrickson, NG1Z	-----	n1gz@nsradio.org
NNY	John Bradke, W2GB	-----	W2GB@N2TY.ORG
NYC/LI (718)	Tom Carrubba, KA2D	(631) 422-9594	ka2d@arrl.net
SNY/NJ/PA (914)	Hank Kiernan, KF2O	(914) 235-4940	hankkier@aol.com
NVT (802)	Al Frugoli, KE1FO	(802) 893-8388	kelfo@arrl.net

Articles in the Scuttlebutt (except for those separately copyrighted) may be reprinted, provided proper credit is given.
The editorial deadline for the Scuttlebutt is the 10th of every odd month.

Trouble Shooting an Astron Linear Power Supply

Jim Ussailis – W1EQO

We will need some tools: Philips screwdriver, VOM, and a load. NOT YOUR TRANSCEIVER!! Two loads capable of full rated current and something at 1/4 current might be helpful. You will find that an analog VOM as well as a digital VOM that has a transistor check section and a continuity beeper are both worthwhile. First a list of common problems and repairs is in order:

A. Quick Check for Common Failures and Possible Remedies

Symptom	Possible Remedy
No output	Read Sections B & C
Receiver hums, Reports of transmitted hum	Check C5 & C1, replace
Acrid smell, possibly hiss	Check electrolytic, Look for leaks of electrolyte
Low output voltage	Transformer, R6, R7, pot R5 on PCB, LM723
Low output current	Pass transistor(s), LM723

B. No Output

First, do the obvious: Unplug the supply¹, connect a load that runs the supply around half of its rated current, change the fuse & plug in the supply. Measure voltage at the output terminals. Does the supply work? No? Continue.

CAUTION

====> ALWAYS UNPLUG THE SUPPLY BEFORE YOU MAKE ANY CHANGE <=====

B.1 Replacement Fuse OK.

Assuming the fuse didn't blow when you plugged the supply in, I suggest you remove the supply cover and measure the DC voltage at those screws that attach the PCB to a big, fat, capacitor that is also mounted to the chassis. Do this both with and without a load on the supply output. You should get something around 18 to 24 volts DC, with the higher voltage for a light or no load.

If the voltage is reasonably correct, the transformer, and rectifier are OK. We need to look elsewhere. As a minimum the repair will use inexpensive components as we just tested "Big Bucks," (transformer).

B.2 Replacement Fuse Blew.

If the fuse blew, then we need to determine which block is the problem. First, however we should disconnect the AC line spike protector / varistor as it could have shorted because of induced lightning on the AC mains.

This device is a black, ceramic disc capacitor shaped, gadgets soldered directly on the input side of the power transformer. Unplug the supply & unsolder one side of the varistor from the transformer, measure the device with an ohmmeter. It should read a high resistance to an ohmmeter and never show a short circuit. In any event, check the supply with the varistor still out of the circuit. If the supply works now, replace the varistor.

I've read that some Astron supplies have a ceramic disc capacitor between the AC mains power wire (Black)² and ground. Remove and check this capacitor for a short. My supplies do not have this capacitor.

I've also read that a failure point can be the crimp connectors and attachments to the case and supply output terminals. You might check these while you are there.

B. 3 Isolate High Current Rectifier and Transformer.

Remove the red wire going from the bridge rectifier (which is used only as a full-wave rectifier) to the PCB board. It might be helpful to remove the screw from the filter capacitor that retains the PCB. This wire can be removed either from the PCB or the rectifier itself.

Replace the blown fuse and turn on the supply. If the fuse again blows, remove the two wires going from the transformer to the rectifier, AND remove the two white wires going from the transformer to the PCB. Again, power up the supply. If the fuse blows the transformer has a shorted turn. You might check the switch before you use the transformer for antenna wire.

B. 4 The Fuse Did Not Blow.

The transformer is probably OK. Check the diodes in the bridge rectifier block. One or both could be shorted. Only two are used of the four in the bridge diode pack, but I would check the other two also. If there is a short, replace the rectifier assembly, reconnect wires, and retest.

Check the filter capacitor (large cylindrical object that holds PCB). Using the analog VOM in a resistance mode, place the red plus lead on capacitor + and black minus lead on capacitor - terminals. The capacitor will slowly charge, resulting in a climbing resistance. This may take a minute or two. If it does not charge, or quickly shows a high reading, replace it.

A non-charge indicates a short; quickly charging indicates a failed (open) capacitor which will cause AC ripple on the supply output and hum on your transmitted signal. If there is a short, disconnect the screws holding the PCB, lift the PCB from the capacitor, recheck the supply with only a DC voltmeter (no load) at the supply output. If there is a 13.8 volt reading, the capacitor is the problem. Replace it.

There are two other relatively easy to check components that will cause no output and probably not blow the fuse: There are two capacitors on the supply output leads, C131 (electrolytic) and C 103 (tiny ceramic across C131) Check them for a short. Again C131 will show some charging effect. One of the mica insulators under one of the pass transistors could also have failed. Check each collector (the case) to ground for continuity. The resistance should be high. I measured greater than 400 K ohms for my RS-20A supply.

B. 5 Dedicated LM723 Power Supply.

The large filter capacitor is not the only filter capacitor in the Astron circuit. They have a separate power supply for the LM723C chip, with its own filter capacitor, C1, rectifier diodes, D1 and D2, and a transient voltage suppression diode, (CR6, PK6E39A)³. electrically across the circuit.

Check LM723C supply at D1 or D2 cathode on the trace side of the PCB for 25 to 29 Volts (load dependant) output. If OK, skip to Section C.1, below.

If there is no or limited output, first check across the two white wires attached to anode sides of D1 and D2 for about 43 Volts AC. If this voltage is much lower, there may be a problem in the transformer. First, however, continue to check the DC side of this supply.

Unplug the supply and check, on PCB component side, CR6, D1, and D2 using diode checker function of your VOM. Check capacitor C1 with an ohmmeter. The diodes should conduct in one direction and not indicate a short, the capacitor should show a fairly fast charging rate and also not show a short.

If the diodes and capacitor are all OK, then I would remove the white wires and carefully measure the transformer voltage again. If it is still low, there is an issue with the transformer.

If all the above is OK, then the no output and potential fuse blowing problems are probably a failure in either: crowbar circuit, current limit circuit, voltage adjustment circuit or pass transistors. Let's do the easier tests first.

C Check Pass Transistors.

A pass transistor failure is the reason the crowbar circuit exists. If the failure is due to a shorted pass transistor, than the diode rectifier peak voltage will appear at the supply output. While the transmitter section of your transceiver may draw enough current to lower the supply output voltage to a reasonable value, chances are very good the receiver section will not. For example, you are running low power in a RTTY contest, you go from transmit to receive and, a poof, you are out of the contest. This is not good.

So for this no output condition, thank Astron for adding the crowbar network. First let's check the pass transistors.

An Astron supply can have from one to many paralleled pass transistors. More current draw requires more of them. Because the current gain of these transistors can vary from lot-to-lot, a low value, series, current balancing resistor is added to each emitter output. Typically, 0.1 ohm, 5%, five or 10 Watt, wire wound.

The first step is to disconnect any load that may be at the supply output. Leave the regulator PCB disconnected from the electrolytic, then measure the value of each current balancing resistor. They should be within 5% of the stated value.

Next let's check the transistors. Place your VOM in diode checking mode. Attach the negative probe to the base of any pass transistor.

It is easy to Identify pass transistor connections. The pass transistors are connected in parallel, except for the emitters: The collectors are tied with a piece of bare bus wire soldered near one of the screw terminals of each transistor. The collectors are also internally tied to the transistor case. A piece of heavy red wire extends from one of the collector terminals to the PCB. This wire may be attached to a center terminal and bar on the socket. This bar also forms the nuts for the screws.

The bases are connected together with a section of light duty, covered, wire. Another light duty wire extends from one base connection to the PCB. Each emitter is connected to a low value power resistor. The other ends of the power resistors are tied together.

Connect a VOM positive lead to any emitter, record the reading. Then swap the VOM leads and record the reading. Finally take the same readings with the leads connected between the base and collector. On my supply the collector is also electrically attached to a terminal between the base and emitter pins.

You may find the base to emitter readings strange. This is because there is about 6K ohms from the base to negative and ground. You should also to take readings with an analog VOM.

I measured the values below for my operational RS-20A supply.

Diode checker VOM		
Connections	Base to Emitter	Base to Collector
Black (-) lead to base	0.470	0.467
Red lead (+) to base	0.67	infinite

Analog VOM		
Connections	Base to Emitter	Base to Collector
Black lead (-) to base	≈ 150 Ohms	≈ 150 Ohms
Red lead (+) to base	Charging to 6K	infinite

Check that no readings are zero ohms as this indicates a shorted transistor. If there is a short, remove each transistor and check them individually. Replace any shorted transistors.

ALWAYS unplug the supply before each measurement or PCB removal. Remember the fuse holder is LIVE.

D Check Voltage Adjustment Resistors.

The voltage adjustment circuit (on component side of PCB) can cause the crowbar circuit to turn on preventing a supply output and a potential blown fuse issue. That circuit is run but R6, R7, adjustment R5 and the LM723. Should R6 fail open, the supply output goes above 18 volts, the crowbar fires and the output goes to zero⁴. A good quick check is for R6 at 2.2K ohms, or less. Check R5 and R7 also. An additional shunt resistor is shown in the schematic across R6. Perhaps this is an afterthought to accommodate a different adjustment potentiometer. My supplies do not have this resistor.

E Check Crowbar Circuit.

E.1 Check SCR.

The easiest method is to temporarily disconnect the crowbar circuit. First REMOVE any equipment you may have attached to the supply. Next discharge the smoothing capacitor(s) with a clip lead. Remove the PCB by removing the two screws that hold the PCB to the DC smoothing capacitor.

Connection	Measurement
Plus lead to plus output Minus lead to minus output	300 Ohms, steady
Minus lead to plus output Plus lead to minus output	Climbs to ≈ 3 K ohms

Next place a clip lead across the output supply terminals for a minute or so to discharge any other capacitors. Then take an analog VOM and measure resistance across these terminals. Compare the results with the table below. If there is a short circuit, look for frayed wires or some other obvious problem. If nothing amiss is found, change the SCR.

E.2 Check Turn-on Signal to SCR.

Locate PCB connection 1 on the underside of the PCB. Unsolder the wire connected there. (Black on my RS-20A) This removes the turn-on signal to the SCR. Again, turn on the supply and measure the voltage at the output. If the voltage is correct, the problem is in the crowbar firing circuit, Q1, CR1, C6 and associated resistors.

On a smaller supply (RS-12A) there is no connection at connection 1. If that is your case, locate R11 and R12 on the lower side of the PCB. Note that these resistors are attached together through a short trace. Carefully remove the two near ends of these resistors, lift them a small amount above the component side of the PCB and attach them together with a tiny amount of solder, while keeping this connection from touching anything else. This also removes the turn-on signal from the SCR. Follow the paragraph above.

E.3 Test Crowbar Circuit For Proper Operation.

Attach a clip lead to a pass transistor emitter / balance resistor lead. Attach another clip lead to a pass transistor collector attachment screw. Keep these leads separated. Attach an analog VOM set to read 20 volts at the supply output terminals. Be careful not to let the VOM leads touch the heat sink.

Plug in and turn on the supply. Verify an approximate output voltage, then touch the unused ends of the clip leads to each other. There should be a spark, the voltmeter might rise for a second, but will read about zero and stay there. Disconnect the clip leads. The voltmeter will not return to any appreciable voltage. The supply power must be recycled for a normal output voltage to appear. This is how the crowbar function operates.

F Check Current Limit Circuit.

As I have read, the current limit foldback circuit works when the output current exceeds 70 amps. I've tried a short across the output that only succeeded in blowing the AC line fuse. It appears that neither of my Astron supplies can approach this current limit.

So the only suggestion is to compare the voltages at pins 2 (current limit), 3 (current sense), and 4, (inverting input) with those in below. Also, check the resistance values of R3, R4, and Rx;. Finally check diode CR3 (1N4148) using the VOM diode checker.

G Check For Shorts on PCB.

Annotated voltage measurement pictures of both PCBs are attached below. I purposely left the PCB in the condition that I found. In several instances I also over annotated, not because I felt the reader couldn't follow the diagram, but because I had a difficult time finding small inter-land traces or open space between lands due to unwashed rosin flux.

LM723C Regulator Voltages - RS-20A Power Supply - No load					
Voltage	Pin	Function	Function	Pin	Voltage
0.0	7	V-	NC	8	25 mV
7.14mV	6	Vref	Vz	9	8.16
7.13mV	5	+ Input	Vout	10	14.35
7.14mV	4	- Input	Vc	11	29.3
13.32mV	3	Current sense	V +	12	29.6
13.14mV	2	Current limit	Freq Comp	13	16.22
120 mV	1	NC	NC	14	13.2
Transformer			Pass Transistors		
Blue wire = 17.89 Vac			E = 13.83 Volts		
Yellow wire = 17.90Vac			B = 14.36 Volts		
			C = 23.90 Volts		
Measurements taken with a Radio Shack, Micronta, 22-184 digital VOM. Negative lead attached to power supply negative output post. - 7 Aug 2015					

Except for the 43 V AC measurements between the diodes D1 and D2, all measurements are with respect to the negative supply output lead.

H Low Voltage.

So far we have dealt with catastrophic failure; a short circuit, blown transistor, etc. Now we shall cover low voltage and low current failures. One helpful piece of equipment is an almost full current load for your supply. This large low values resistors, often found at a flea market

First calculate what resistance will be required to load your supply to draw about 50 to 80% of its full current at 13.8 volts. Let's assume you are repairing a 35 amp supply, so you need a load that draws 20 amps:

$$R = E / I = 13.8 / 20 = 0.69 \text{ Ohms} \approx 0.7 \text{ Ohms.}$$

$$P = E * I = 13.8 * 20 = 270 \text{ Watts.}$$

Any wattage above 100 or so will work as we will take very quick measurements. A small fan will also help cooling the load.

This resistor can also be constructed from any series / parallel combination of smaller value (easier to obtain) resistors. Don't overlook that bag of 27 Ohm, 5 Watt resistors for almost free.

The low voltage issue can be caused by almost any failure in the supply circuit. First we will concentrate on the easier to test sections.

H.1 Check Transformer & Rectifier Diodes.

This test is easily done by attaching a VOM lead to the negative output post and the positive lead to one the collectors of the pass transistors. The case top doesn't have to be removed. Adjust the VOM to read a 20 or 25 volt scale. With no load attached, turn on the supply and note the voltage. It should be about 23 Volts. Then load the supply so that 50 to 70% of its rated current is drawn. The voltage should fall, but be remain above 19 Volts or so.

If the voltage has fallen below about 17 there is either a problem with the transformer, or the diode bridge. There is a slight chance of an unusual failure in the large filter (smoothing) capacitor.

Shut the supply off, open & remove the case cover, remove the screws that hold the PCB to the capacitor and place a piece of insulating material between the PCB and capacitor. Repeat the previous measurement with the capacitor out of the circuit.

Next let's isolate the rectifier bridge. Remove the two transformer wires that are attached to the bridge. Attach the VOM, set for an AC voltage, between the negative supply post and one of the secondary transformer wires that connected to the diode bridge. You should read about 17.5 Volts⁵. Take the same measurement on the other wire you removed from the bridge. They should be closely the same.

Next electrically place your load across the VOM terminals and repeat the above measurements. They will fall a volt or two, and should be about the same. If one or both voltages are much lower with the load, the transformer probably has a "shorted turn" in one of its windings.

If these voltages are OK, check the diode rectifier bridge with the diode checker position of your ohm-meter. If there is a problem, change the diode bridge. If the transformer, rectifier, capacitor and pass transistors are all OK, then the problem is in the PCB.

H. 2 Check PCB Voltages.

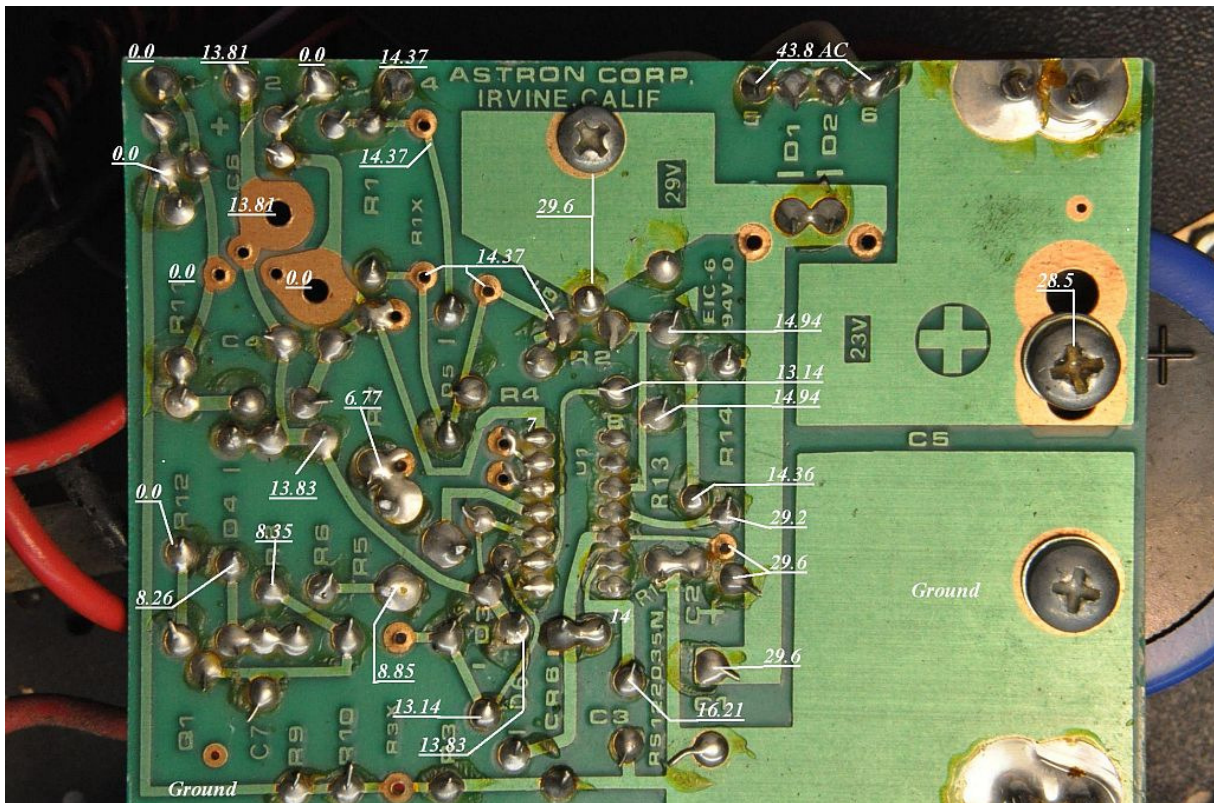
Reassemble the transformer connections to the diode bridge, reconnect the PCB to the capacitor, and attach the load to the output terminals. We will be measuring PCB voltages. Review C.5, above.

A list of voltages and two annotated pictures are attached below. Next, turn on the supply and measure the AC voltage⁶ between PCB connections five and six. These two connections are on the upper right-hand edge of the PCB. Two white transformer wires lead to these terminals on the component side of the PCB. You should read about 43 Volts AC. This is the only AC voltage present on the PCB.

Next connect the negative lead of the VOM to the power supply negative terminal⁷. Check the voltage at the cathode of D1 and D2, the large foil area below the 43 Volt AC measurement. This should be about 29 Volts DC. This voltage runs the LM732C chip. Potential failures are C1, D1, D2, CR6 (a transient absorber) and the LM723C.

If it is OK, then measure the voltage on pin 4 of the LM723. The bottom arrangement for pins 7 and 14 is given on the PCB picture for the RS-20A supply. Pin eight is marked as a figure in the copper just above pin eight on the right-hand side of the chip layout. The reading on Pin 4 should be close to 7.14 Volts. This value comes from the voltage adjustment potentiometer (R5) and a voltage divider (R6, R7), and determines the power supply output voltage.

If neither of these measurements solve the low voltage problem, then check all the voltages given in the pictures. Since both PCBs are very similar, I would use check my supply against both pictures. Also, use the VOM diode checker to check the transistors and diodes on the PCB.



Should there still be a problem, the only component left to replace the LM723C. I suggest you replace it with an LM723 (no 'C'), as the 'C' designation indicates a commercial version, rated for 0 to 70 C, while the non-'C' version that is rated for -55 to +125 C.

The LM723H is a '723 in a 10 lead metal can pack; the LM723E is a 20 lead surface mount pack. Both of these are unworkable in an Astron supply without a major PCB revision.

J Supply Does Not Provide Rated Current.

Review the section above. Generally when the current draw is insufficient, the voltage output falls off also, usually for the same failure reasons. Look at the AC to DC block first. Check the transformer, rectifier and pass transistors.

Then look at the PCB. Check voltages around the current limit circuitry. Pin 2 and Pin 3 of the LM723. I find the schematic from pg 11 of the National Semiconductor datasheet helpful, BUT do notice that the pin numbers there are for the LM723H, a different package. Don't overlook the possibility of a shorted, small value, capacitor. If all fails, change the LM723C.

K Hum.

You have reports of hum on your transmitted signal, but hear nothing in when receiving. This is a classic problem. An increased load on a supply with an "aging" filter capacitor cause increased the ripple voltage. The reason is that the designer of the supply set the regulation voltage low enough to do some of the ripple filtering. Unfortunately as the current draw increases, the voltage into the capacitor and regulator drops to the point now where the ripple that was "on top" of the DC voltage goes below the regulation voltage and onto the supply output. Hummmm.

If you have an oscilloscope, you can easily see the ripple. Use an AC input, sync on "line."

Solution: Replace filter (smoothing) capacitor. Do not buy a new-old-stock (NOS) unit. Electrolytic capacitors often age while just sitting there. Do spend the extra to buy a new capacitor from a reputable supplier. This is not a flea market item.

Notes:

- 1 - Some web sites mention that the fuse holder might be improperly wired. They say the AC line should connect to the end pin, the ring is connected to the wire going into the supply. This is done so that if you should remove a good fuse it's exposed terminal and cover isn't live.
- 2 - In the electrical world, a black wire indicates the HOT side, a white wire is used for neutral and green for ground.
- 3 - Presently manufactured by Littlefuse, available at Digikey
- 4 - I tried this on my RS-12A. The crowbar circuit fired as expected.
- 5 - I measured 17.39 on an RS-12A; 17.90 on an RS-20A
- 6 - This AC voltage measurement is the only measurement between two terminals. All others are taken with respect to the negative power supply lead.
- 7 - I have read where some Astron supplies do not have case ground tied to the negative output.

- . - - / - . . . / - . . . / - . . .

(Captain's Cabin: Continued from Page 1)

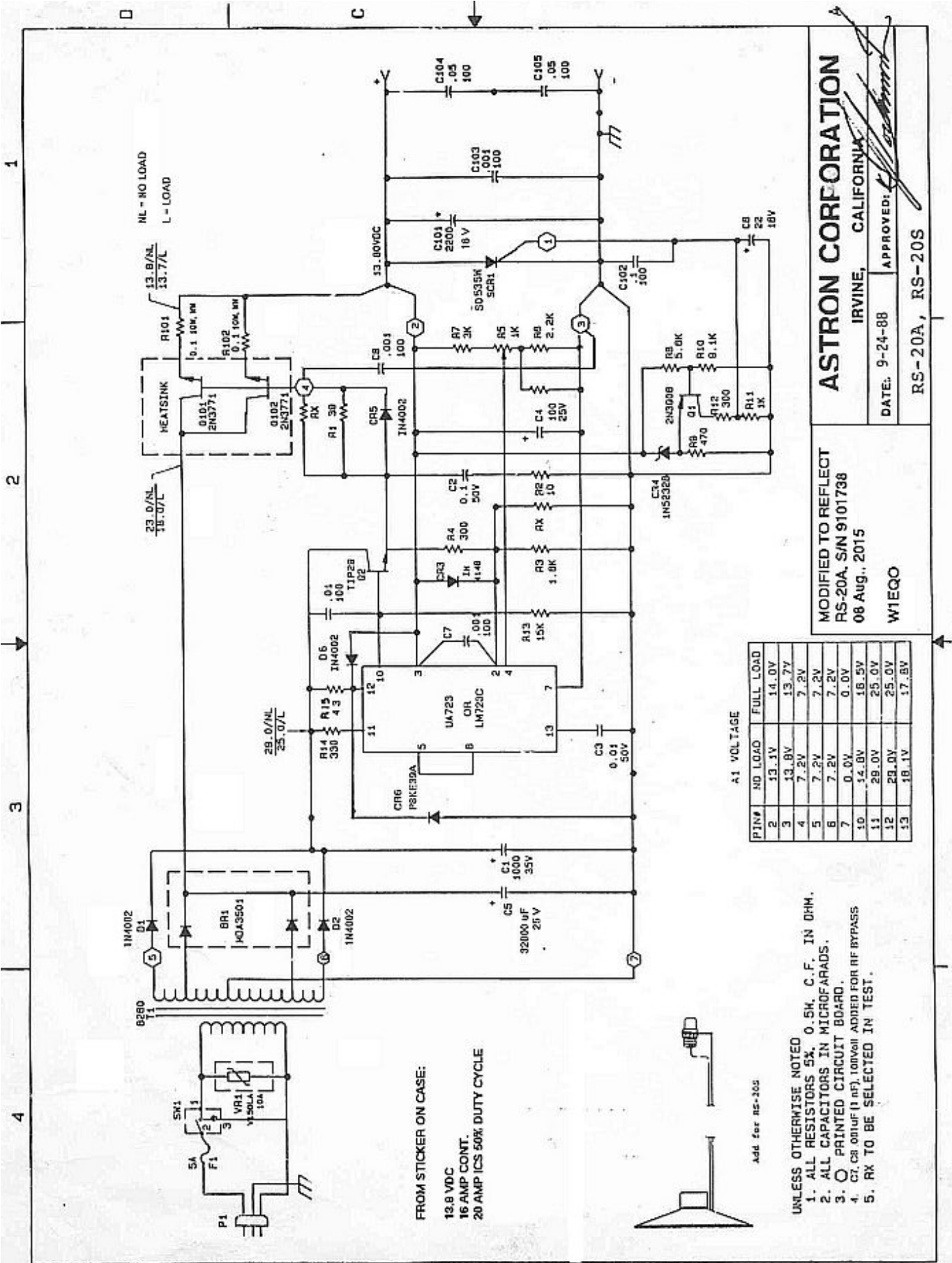
So in the abstract, it may seem silly to combine 275 separate and distinct logs and call it a club score. But by doing so, we create a common goal which motivates us to do all the little things that make YCCC great. In the final analysis, even though this year our score was lower than FRC, we all still won.

New Crew

Thanks to some very productive meetings last spring, YCCC now has over 20 new members who were not aboard last season. Just as it is critical for a new ham who just got their license to get on the air and make those first few contacts, I think it is critical to welcome our new members and get them involved with club activities. The most important thing is to get everyone active for the upcoming contests. For many of the new members, this will be their first Scuttlebutt. If you are reading your first 'Butt, welcome aboard – and make sure you find a seat for CQWW in October! If you do the mental math, you can figure out that to make up last year's deficit, if each of our new members can contribute an average score of 225K points, we could catch FRC. So this is a reasonable goal for the newcomers – and I know it is a tall order for some, but much easier for others. Did you bring one of these new members to the meeting where they joined? If so, use your personal connection to help them get on for the contest and have fun! If you have seats for a contest, let everyone know. If you need a place to operate, make a post on the reflector – a multi-op near you will welcome you aboard!

Boxboro

YCCC will have a great presence at the upcoming Boxboro Convention. We will be holding a meeting on Saturday, August 22 from 1-5pm in the Federal Room, where we will have some great presentations and seminars. If you have a ham friend who is not yet a member, this is a great opportunity to bring them to a meeting and get them signed up. YCCC is also sponsoring door prizes at the DX dinner



A1 VOLTAGE

P/IN	NO LOAD	FULL LOAD
2	13.1V	14.0V
3	13.8V	13.7V
4	7.2V	7.2V
5	7.2V	7.2V
6	7.2V	7.2V
7	0.0V	0.0V
10	14.0V	18.5V
11	29.0V	25.0V
12	29.0V	25.0V
13	18.1V	17.8V

YCCC CLUB RESOURCE INFORMATION

DUES AND MEMBERSHIP STUFF Dues for the year are payable as of January 1st. The YCCC has adopted a multi-tiered membership format as follows: Please note that payment of dues IS NOT a prerequisite for contributing scores to the Club aggregate, but IS for the various YCCC Awards Programs

Full Member - \$15/yr (Eligible for YCCC member benefits and electronic "Ebutt" delivery of Club newsletter)

Full Member - \$30/yr (Eligible for YCCC member benefits and paper delivery of Club newsletter)

Family Member - \$0 (Grants full membership to all amateurs residing at one domicile on payment of one member's "Full Member" annual dues and entitlement to one Club Newsletter sent to one domicile or email address. All members of said family are eligible for YCCC member benefits.)

Student Member - \$10 (Grants full membership to students at a reduced level. Eligible for YCCC awards programs and paper or electronic delivery of the Club Newsletter.)

Subscription - \$** (A "supportive friend of YCCC" - not a member but a possible candidate for future membership. Only receives club newsletter in paper or electronic form. \$10 for electronic "Ebutt" delivery domestically or overseas or \$25 for domestic paper delivery.)

Club members who move out of club territory and so are not eligible to contribute to club aggregate scores can continue to participate in the Club's e-mail reflector and receive the electronic "Ebutt" delivery of newsletter at no cost.

You can tell if you owe dues by checking your 'Butt mailing label or the Club roster in the Members Only section of the website.

NOTE: If your dues are paid to a March 31 date, then you now need to synchronize to the calendar year. Please see the "Dues" area on the Members Only section of the website for the pro-rated dues amount for a partial year.

Mail your dues to the club treasurer, Chet Slabinski, N8RA, 462 W. Hill Rd, New Hartford, CT 06057.

SCUTTLEBUTT ARTICLES should be sent to the Scuttlebutt editor, Steve Rodowicz N1SR, by E-mail at n1sr@arrrl.net The deadline for each issue is the 10th of the preceding month..

Scuttlebutt Advertising: Nominal Business Card sized ad, \$50 per year (6 appearances)

CONTEST SCORES should be sent to the club scorekeeper, Alec Berman, W2JU, preferably by E-mail at scores@yccc.org. Please include details such as numbers of QSOs, QSO points (if appropriate), and multipliers (all types); entry category; and power.

CLUB GOODIES

BADGES YCCC badges are available from Tony, K1KP. Send \$3, name and call desired on the badge, and your mailing address to Tony.

APPAREL Contact Richie, W1STT. Email: richd1313@aol.com

YCCC LOGO ITEMS <http://www.cafepress.com/n1k>

QSL CARDS are ordered through Dennis Egan, W1UE. To order, send Dennis an email at egan.dennis88@gmail.com, detailing card information per "QSL Request" form available at http://www.yccc.org/members/yccc_qsl.htm. You will receive a proof by email. Approve the proof, making any corrections, and return to Dennis *with payment* (make checks out to Dennis, not YCCC). Current price is \$50 (delivered) for 1,000 cards. Also available is the glossy version for \$70/1000.

MEMBERSHIP ROSTER is posed on the YCCC website. Updates are published in 'Movers and Shakers' when members move or change call signs.

COMPUTER STUFF INTERNET REFLECTOR There is an Internet mailing list for YCCC members. To subscribe, send mail to yccc-REQUEST@yccc.org. Insert only the word "subscribe" in the subject of the mail message. (Do not send messages to the reflector that have file attachments, HTML formatting, use boldface or other fancy fonts, etc.)

WWW HOME PAGE Come visit us at <http://www.yccc.org> Our Webmaster is Lyn Glagowski, WB1CCL.

ADMINISTRATIVE STUFF The W1 QSL BUREAU is sponsored by the YCCC. More information at: www.w1qsl.org Address: W1 QSL Bureau, PO Box 7388, Milford, MA 01757-7388. Email address: w1qsl@yccc.org

ARRL COMMITTEE REPS are:

CAC: New England Dennis Egan, W1UE **Hudson** George Wilner, K2ONP **Atlantic** Charles D Fulp Jr, K3WW

DXAC: New England Bob Beudet, W1YRC **Hudson** John Sawina, NA2R **Atlantic** Chris Shalvoy, K2CS

VUAC: New England Ed Parish, K1EP **Hudson** Frederick Lass, K2TR **Atlantic** Joe Taylor, K1JT

ARRL LIAISON: Sean Kutzko, KX9X
