



Scuttlebutt

April 1993

Issue 103

Floating

Paul Young, K1XM

Because of other commitments I had to get this Scuttlebutt out very early. Several things didn't reach me in time, including the President's column. I'm sure it would have talked about the the ARRL DX Contests, the recent Contest Universities, the by-laws amendment, and elections.

Secretary's Report, Yankee Clipper Contest Club

The February, 1993, meeting of the Yankee Clipper Contest Club was held on Sunday, February 7, at the Sturbridge Host Hotel in Sturbridge, Massachusetts. To make up for the various logistics problems at the December meeting, the hotel supplied free coffee, and gave us the use of the large meeting room for free! To get the meeting started on the right note, Club President Rich, K2WR, opened the meeting by singing his new DXing song, based on "Car 54, Where Are You?" and featuring lyrics about our surprise guest for the afternoon, Romeo, 3W3RR. The club financial report showed a balance of \$2262.80. The financial statement and the December minutes as printed in the previous Scuttlebutt were approved. After this business, the seventy-seven members and guests present introduced themselves, and welcomed into membership nine new and returning members (see "New Crew" column).

Rich then announced two Contest University meetings, one to be held February 9th at the QTH of Susan, WN1V, and Mike, K1TWF, in the East Mass. section,

and one to be held on February 27th in the room above the W1AW station at ARRL Headquarters in Newington, Ct., in the Ct./RI section.

Dave, KY1H needed operators for the ARRL DX Contests, especially for the CW contest. Charles, WZ1R, had prototype new club badges made for some of the officers and members. He is still working on the design of the badges and expects them to cost about \$2. Rich, K1CC, had computer interfaces (and brochures) for Kenwood, ICOM, and Yaesu radios for \$50.

Tom, K1KI, Vice President of the ARRL, then discussed what's new in Newington. The most interesting proposal concerned packet automatic forwarding HF subbands. He also said that the November, 1992, issue of QST was the largest issue ever, which translates into lots of advertising revenue for the ARRL. However, publication sales are down from last year. The February QST began a new column for newly-licensed hams, and the ARRL has a new 800 number for new hams. Tom said that among the 7 to 17 age group, the number of new ham licenses grew 80% last year (7000 new hams). Requests to the ARRL for reciprocal license information have gone way up. The DXCC backlog is getting under control, with about 170,000 cards left to process and processing about 20,000 cards a week. The DXCC desk was currently working on applications submitted in October. He also mentioned that the scheduled March Space Shuttle launch had a 100% ham crew and was supposed to do an orbit change to test the 2m antenna in the shuttle's cargo bay, as well as perhaps some 10m operation. Five of

Continued on Page 2

April Meeting

Paul Young, K1XM

The next meeting of the Yankee Clipper Contest Club will be on Saturday, April 3, at the Sturbridge Host Hotel, beginning at 1 pm.

KC1AG will lead a discussion of DXCC rule changes. The DXAC has been asked by the Board to solicit input from DX clubs in each member's division. That means us!

The club will vote on the by-laws amendment included in this issue of the Scuttlebutt.

The program will also include election of officers.

The Host Hotel is located on Route 20 in Sturbridge, Massachusetts, 1/2 mile West of I-84 (first exit off I-84 when coming South from the Mass. Turnpike).

To get to the Host Hotel, exit I-84 on to Route 20 West. You will pass through two sets of stoplights while noticing several motels on your right. Make a right turn just prior to the Burger King sign. This is the entrance to the Host Hotel. There is plenty of parking in front of the hotel.

The meeting dates for the rest of 1993 are:

DATE	DAY
April 3, 1993	Saturday
June 6, 1993	Sunday
August 7, 1993	Saturday
October 3, 1993	Sunday
December 5, 1993	Sunday

The August meeting may be the club picnic or may be moved to the New England Division Convention.

this year's Space Shuttle missions are supposed to include ham radio operation. The ARRL Board is looking for ways to expand DXCC field checking for endorsements, and is trying to get the FCC to issue club call signs again.

Rich, K2WR, then read the list of upcoming flea markets.

Dean, N6BV, then continued his discussion on the IONCAP propagation predictions he began at the Boxboro meeting by comparing some CQ WW CW logs (K1AR, W1PH, and his own log) with his IONCAP propagation predictions for each band, with remarkably good correlation. He then compared the S79S CQ WW CW log with the predictions for that location, which also tracked well. Then he presented his predictions for the ARRL contests. His predictions are based on the following "standard" antennas: 100' inv V on 80m and 40m, 100' 3 element Yagi on 20m, and 60' 4 element Yagis on 15m and 10m. Those with larger or smaller antenna systems need to adjust the predictions for their own antennas. Dean also showed comparisons of predicted signal strength during the ARRL CW contest from different US call areas. He offered to send copies of his charts to anyone who sent him an SASE, and also offered to put the files on disk in spreadsheet format.

Doug, K1DG, then discussed the Poisson d'Avril Contest set for April Fools' Day; see CQ for this year's new rules.

Then, new member Romeo, AH0M (3W3RR, etc.) talked about the P5RS7 operation, with Ed, NT2X, translating. Romeo had copies of the P5 log with him, so members were able to confirm that they were in the log. He did not have the QSL cards, however.

Then Paul, K1XM, and Charlotte, KQ1F, showed a multi-media program on the S79S CQ WW CW contest DXpedition. The program showed both their 5.3M multisingle contest effort, and the terrestrial and underwater life of the Seychelles.

Respectfully submitted,
Charlotte L. Richardson, KQ1F
Secretary/Treasurer
11 February 1993

Proposed By-Law Amendment

Add new section as follows:

6A. When exceptional circumstances warrant, and upon the unanimous recommendation of all the club officers present, payment of dues for an individual member may be permanently waived with the approval of 4/5 of the members attending and voting at a Regular Meeting.

This amendment will be VOTED at the April meeting.

YCCC: Its Birth and the Early Years - Part II

Jeff Briggs, K1ZM

(In the past issue of the 'Butt we reviewed the historical background leading up to the formation of YCCC. The glory days of Murphy's Marauders in 1973-74 were described and the decline that followed which ultimately had led to the splitting off of some members of MM to join the NorthEast Contest Club (NECC) in early 1976. We left off with the election of K1ZM to the Presidency of MM in 1976, whose election to the office had been "tacit approval" by the membership of a plan to open a dialogue with the officers of NECC concerning possible unification of the two clubs.)

A Dialogue Begins

Almost immediately following the club elections, an informal working committee was formed within MM and given the task of opening communications with NECC. Over the air discussions among the parties had indicated a willingness within NECC to at least consider some new arrangement as long as there existed the legitimate prospect of creating a different kind of club at the end result of the deliberations - one that would be truly regional in its underlying charter and operation.

With that understanding in mind, an initial meeting was held in Worcester, Mass. at the home of Bob Czajkowski, WA1TAI (now N1TZ) and included

Roger Burt, W5UDK/1 (now N4ZC), Jeff Bouvier, K1LPA (K1IU), Rich Roth, K1OME, Charlie Carroll, W1GQO (K1XX), and Jeff Briggs, WA2CLQ (K1ZM). (Apart from being sort of neutral ground, Bob's place offered some of the best cold cuts and beer around!)

The Meeting's Mission Is Defined

During the course of the meeting many former "grievances" were discussed but, only as a frame of reference as to what obviously did NOT work well before within MM. Generally speaking, it was an extremely positive meeting that had one very straightforward purpose. We defined our mission at the outset as a "what if" discussion aimed at seeing what it would take to again build a "super club" within the NorthEast, that is, what would the underlying framework need to be to make it happen? How might we define a charter that would be equitable to all concerned? How do you create a sense of purpose to make guys want to drive 150 miles to a meeting just to enjoy each other's fellowship and have fun competing with other big clubs - all at the same time? What would we need to do both to attract new members into the organization and especially new contesters who needed to learn the ropes as to what club contesting is all about? What should the implementation plan be and how should it be presented to the members of both NECC and MM for a decision as to whether to form the new club or not?

Key Elements of the Proposed Club Are Hammered Out

Obviously, this was quite a laundry list of issues but all of them were given a fair hearing by the end of the afternoon. Fortunately Rich, K1OME, had brought along a draft charter which we used as a strawman during our deliberations. It was modified extensively in its final form but for the better, we thought., when we were done. In summary, then, the following outlines the basic framework that was proposed for the new club.

1) The club would be defined as a regional club. 2) There would be four meetings a year. These would rotate somewhat throughout club territory to be equitable to all the members - 2 meetings in Worcester, Mass., 1 meeting either in West Mass.

or Eastern New York, and 1 meeting in Hartford to be held at the New England Division Convention. (In those days, the NE Convention was held every other year in Hartford, Ct., rather than at Boxboro, Mass.) 3) Meeting sites would be selected at points as close to the Interstate highway system as possible in order to make it convenient for those traveling great distances to attend club meetings. Meetings would be held on weekends to maximize possible attendance. (Murphy meetings, believe it or not, were held on weekday evenings in various members' homes! It was good fellowship but mighty tough to do from 150 miles away!) 4) The club center would move North along the Mass./Conn. border approximately equidistant from the club's two major population centers, Hartford and Boston. The exact site would be determined later after studying the two clubs' rosters to see what might be done to keep as many members as possible within the 50 mile zone defined by the ARRL as PRIMARY club territory. (Members within 50 miles of the club center were not required to make 2 meetings a year in order to maintain ARRL contest eligibility - so this was a task that required careful analysis. To this day I still have in my possession a very dogeared map of New England onto which the various members' call signs are plotted with two concentric circles indicating the 50 mile exclusion zone and the club's 175 miles territorial boundary!) 5) Members would be encouraged, but not required, to submit scores to the club aggregate. There would be no "chicken regs" in the club constitution; occasional participation elsewhere was OK. 6) An activities manager position would be created within the club to design meeting programs. "How to" programs, slide shows and membership participation activities would be accorded a high priority at club meetings. (This concept became the forerunner to the current YCCC "Contest University" program.) Over the air "mini-contest" practice sessions would be conducted weekly on a new club gathering frequency which was set at 3830kHz! (This, by the way, was the forerunner to the current 3830kHz contest post-mortem gathering sessions conducted today. The YCCC local club gathering frequency has since been adopted as the

national clearing house frequency for reporting contest results and determining "unofficial" bragging rights as to who won the contest!) 7) Summer "pizza and beer gatherings" and a club picnic (all unofficial meetings at that time) would be held all over club territory to keep members active and involved with the club in the contest off-season. 8) Regional managers would be installed throughout club territory to help collect scores, act as clearing houses for operators in multi-multis and to help with antenna parties, when required. 9) The club would host a hospitality suite at Dayton in order to gain as much national exposure as possible after its formation. 10) An attempt would be made to link 2m FM repeaters throughout the club as a means of multiplier spotting in contests. (This was a twinkle in many minds' eyes in 1977. Nobody could even conceive what wonders packet radio would bring about within ten short years and what marvelous benefits it would mean toward keeping the club interested and involved outside the contests themselves! But, at least we knew we needed to have a club-wide spotting system of some kind, if it could be worked out!) 11) The name of the new club would be decided by all of the assembled members at the club's first meeting in order to be fair to everyone from both clubs. 12) Finally, the draft constitution agreed upon at the meeting and the minutes of the meeting itself would be reporting in BOTH clubs' newsletters to advise the members of what had been worked out. SEPARATE NECC and MM meetings would follow in about a month's time where members would be given a chance to discuss the proposal and then choose whether or not to disband the two existing clubs and form a new regional club!

The Fun Really Begins!

From this point forward, Roger Burt and I held frequent discussions and we honestly felt we all had come up with a really good framework to present to our members. Roger believed the plan would ultimately be accepted by the NECC group once they had had a chance to become familiar with the specifics. I was not nearly as confident about MM ratification because I knew there were very strongly-

held feelings among some members about remaining a local Hartford-based club.

It was decided that not only would the details of the proposal be set forth in the club newsletter, the Murphy Message, but an attempt would also be made to discuss it PERSONALLY with every member of the Murphy roster in order to learn people's points of view and to lobby for a positive outcome. The process of how this was done, which was unique indeed, has NEVER BEFORE been revealed. In the next issue we will describe it and the events leading up to what became a cliff-hanger MM meeting that was held at ARRL Headquarters on a snowy night early in 1977 to determine the answer. See you next issue!

First Day DXCC

Jack Schuster, W1WEF

I thought I would see how long it takes to make DXCC with packet. By 2:30 this afternoon (January 1st), there had been 100 countries spotted on the YCCC packet cluster. Since the easiest to work, more common countries weren't spotted, one could have finished DXCC even earlier! Spots on this first day of the year included some of the countries that we waited years for in the past - S2, ZA, 5R8, 9V, T5, TA, T32, C9,... Wonder if it's possible to make Honor Roll in a month?

Automatic Antenna Switching for the Kenwood TS-940S

Gerald J. Kersus, W1GD

(reprinted from the Frankford Radio Club Newsletter, February, 1993)

At the July FRC meeting at NF2L's I was impressed by Bill's ability to automatically switch antennas as his ICOM 781 changed bands. I'd thought about doing this from my TS-940 several years ago, but I never took the time to follow through. As a result, I (and my amplifier) have sometimes suffered during the wee hours of the contests when I've forgotten to change antennas when changing bands. At the next FRC meeting at KY3N's, I found out that Jon, AA1K, has built an antenna switching system for his 940.

However, based on some info Jon gave me, I came up with a different approach that requires less work inside the 940, but requires some external control circuitry instead.

While this article specifically addresses the TS-940, the same approach can be used to switch antennas from other Kenwood radios like the 930, 400, 950, etc.

While perusing the TS-940 Service Manual, I found that the AT-940 coil taps are selected based on band information that is passed from the Digital Board. Five signal leads (WRC, AT0, AT1, AT2, and AT3) supply the band data to the tuner. I take these signal leads from the radio and use them to drive control logic that could, in turn, drive remote antenna relays.

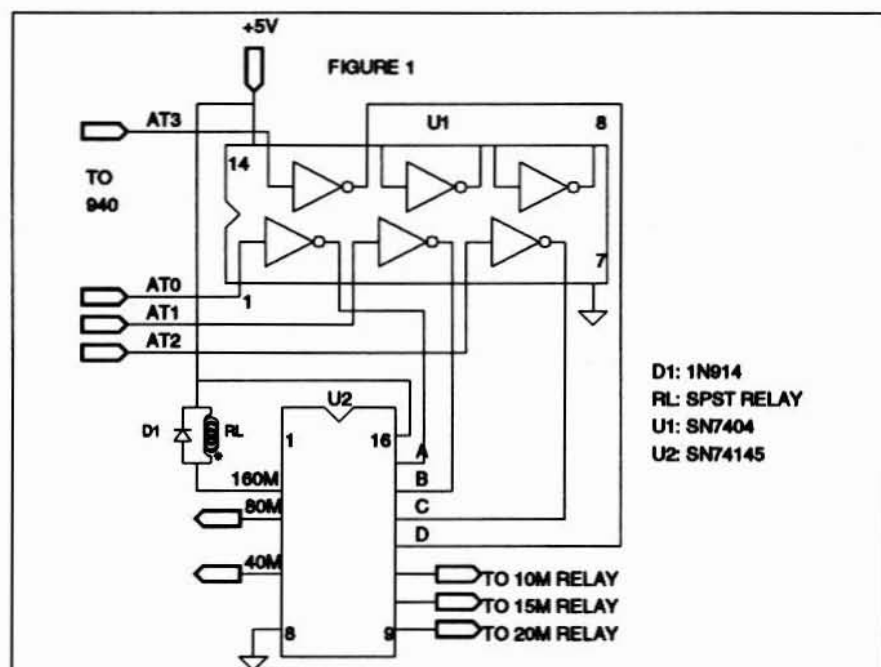
Since I don't use the WARC bands in contests, the control circuit I built (shown in Figure 1) only accommodates 160, 80, 40, 20, 15, and 10 meter antennas. Signals from the AT0, AT1, AT2, and AT3 leads are first inverted using the SN74040 hex inverter and then applied to the inputs of a SN74145 BCD-to-decimal decoder/driver. (I actually used a SN74LS145, but any chip in that "family" should work.) The outputs of the decoder ship are used to control 5-VDT SPST reed relays (Radio Shack No. 275-232.) (For clarity, Figure 1 shows the relay circuit for 160 meters.) These relays, in turn, are used to apply the appropriate voltage to switch the antenna relays out at the tower. The current needed for the reed relays is low enough that they can be driven directly by the SN74LS145.

You'll need one relay for each antenna you need to switch. For example, I use this control circuit with a Heath HD-1481 switch to select between a tribander, 40M slopers, 80M inverted-V, and 160M inverted-L. The default is the tribander and relays are used to switch in the 40, 80, and 160 antennas. A similar approach can be used with the Ameritron RCS-4V, etc. For the circuit in Figure 1, the table below shows which pin on the SN74LS145 is low for each band. (When the pin voltage goes low, the relay is closed.)

Band	160	80	40	20	15	10
Pin	3	4	6	9	20	11

According to the TS-940 Service Manual, control signals WRC, AT0, AT1, AT2, and AT3 are on a 5-pin connector labeled "15". However, on my radio, this connector is labeled "18". In any case, it is the only 5-pin connector going to the AT-940. AA1K told me that there were several unused pins on the 13-pin ACC2 jack that could be used to bring the control leads out of the radio. He also warned me about what a pain it was to wire a cable to a 13-pin DIN connector! Since I don't have a tuner in my radio, I simply took a mating 5-pin connector, soldered five wires to it and routed the five wires from the tuner connector to the ACC2 jack. Keeping in mind Jon's warning, I tried to use unused pins on the outside perimeter of the connector. The made soldering the cable easier, but it was still a pain! I decided to bring out the WRC signal (which is only active when tuning to the WARC bands) at this time in case I need it in the future. If you're not interested in switching WARC band antennas, you don't have to bring this lead out of the radio. If you have the AT-940 installed, you should be able to bridge on to the 5 control leads and wire them to the ACC2 jack.

I ran a six wire cable (WRC, AT0, AT1, AT2, AT3, plus GND) directly from the 940-S ACC2 jack to the control box for my Heath HD-1481. I used a length of old 8-conductor rotor cable for this cable and just clipped off the two heavier wires. The control box has plenty of room for a



small perf board with the necessary ICs and relays. To power the ICs and relays, I connected a separate rectifier and 5 volt regulator to the transformer in the HD-1481.

This system has worked flawlessly for over three months including both CQWW weekends and both SS weekends. Not, if I could only work that Alpha 87 into the household budget, I'd never have to turn another switch to change bands...

ENY/WMA Section Contest University

Brian Szewczyk, NJ1F

The ENY/WMA sections of the YCCC held a Contest University on Saturday, January 9, 1993, at the QTH of Fred, K2TR. The session was well-attended by 25 YCCCs and potential new members. The program started with a talk about effective station design and layout by Dave, KY1H. Dave answered many questions that the group had. He also had on display his propagation program and answered questions about propagation.

Following Dave's presentation, Saul, K2XA, did a commercial announcement about the YCCC and the benefits of being a member of the best contest club in the world. After the commercial, Fred, K2TR, Saul, K2XA, Brian, NJ1F, and Len, KB1W, addressed the group on general operating practices, giving your call sign effectively, breaking pileups, running, and setting real goals based on station size/operating time. Saul gave tips on maximizing one's score by maybe operating one hour on 20, 15, and 10 meters. This yields a good size score with a minimum amount of operating time and total QSOs.

Other topics brought up by the group included how to use packet to increase one's score. Someone pointed out that going immediately to a spot with a small station can be very frustrating. Fred and Saul advised those in attendance not to be a DXer during the contest. Remember

that the P5 counts the same as a GW4 in the ARRL contest. This brought up a question of how long one should stay in a pileup? The conclusion was don't stay in the pileup for the P5 for 30 minutes while you still need something common like a G4 on 20.

Len talked about CW operating and gave tips on how to increase your speed. He advised that one should have a few CW contests under one's belt before trying the ARRL November Sweepstakes because of the exchange. George, K2ONP, talked about using two radios during the CQ WW CW Contest. He felt that it is easier to use two radios on CW than on phone.

The final group discussion was about antennas. A big topic was effective listening antennas for the low bands, which don't require a lot the size of Texas.

Next was a pizza break during which the group engaged in friendly conversation with one another. A few hardy souls took a tour of Fred's antenna system despite the bitter cold temperature. Most stayed inside and looked at Dave's propagation program, packet, and listened to a few JAs coming through on 75 meters. We had the pizza break last due to the fact that the Contest University started at 1 pm and ended at 4:30 pm.

New Crew

Please welcome the following new and returning members, who joined at the February meeting:

Linda A. Allen, KB1AOL
93 Spectacle Hill Rd.
Bolton, MA 01740
home phone: (508)779-6189

Thomas E. Maqgera, KA1CZF
23 Thames Way
Madison, CT 06443
home phone: (203)421-4818
work phone: (203)481-5771

Roland Matthews, Jr., AA1EY
291 Riverbend St., #2
Athol, MA 01331
home phone: (508)249-9066

John F. Dould, WF1L
22 South Athol Rd.
Athol, MA 01331
home phone: (508)249-5905

David Case, KA1NCN
71 W. Old Rte. 6
Hampton, CT 06247
home phone: (203)455-9324
work phone: (203)450-0220

Gus Fallgren, W1OG
31 Byam Rd.
Chelmsford, MA 01824
home phone: (508)256-2090

John Thomas, K1VWL
44 Garnet Park Rd.
Madison, CT 06443
home phone: (203)245-3182
work phone: (203)453-0575

Leonard Kay, KB2R
23 Rickey Dr.
Maynard, MA 01754
work phone: (617)437-5417

Romeo Stepanenko, AH0M
Box 776
Brooklyn, NY 11230
home phone: 7(095)9712151
work phone: (718)284.44.93

Movers and Shakers

New address for Jim, AD1C:

James J. Reisert, AD1C
181 Littleton Road #320
Chelmsford, MA 01824-2662
home phone: (508)250-0686
work phone: (508)493-5747

New address for Mike, WA1UAR:

Michael A. McCarthy, WA1UAR
66 Liberty Street
Acton, MA 01720
home phone: (508)635-0540
work phone: (508)264-9433

Score Rumors

ARRL DX Contest CW

Single Op:

Call	QSOs	Cs	Score
*KM1H	2739	428	3.51M
(KQ2M op)			
W1IHN	827	?	680K
K1JKS	1138	?	964K
*KS1L	2652	382	3.0M
(K1CC op)			
AA2U/GRP	860	287	760K
(at N2FB)			
WR3E	2204	370	3.44M
K3ZO	2124	397	2.5M
K5GN	2049	387	2.3M
*N6BV/1	2651	385	3.06M
K8GL	1607	369	1.77M
KW8N	?	390	2.41M
(WD8IXE op)			
NA8V	1834	360	1.98M
KB9BIB	689	196	405K
K9GR	221	122	78K
W9RE	1938	351	2M
VP5F	6367	344	4.38M
(KR0Y op)			

Single Op Low Power:

Call	QSOs	Cs	Score
W1PH	1487	346	1.3M
K1VSK?	1047	317	994K
N4PY	925	280	737K
W5XZ	?	?	880K
K0EJ	1141	276	949K

Single Op Assisted:

Call	QSOs	Cs	Score
KC1F	1876	372	2.09M
W1FJ	1100	307	1M
KT1O	803	286	688K
KC1XX	1934	429	2.48M
AA2DU	?	148	120K
W2GD	1832	489	2.68M
KF2O	910	360	982K
K3WW	2316	481	3.36M
K5NA/2	2972	497	3.1M
K8JP	839	324	813K

Single Op Single Band:

Call	Band	QSOs	Cs	Score
K9LJN	15	562	83	139K
low power				
KT3Y	20	1519	109	496K
K1IU	80	646	85	109K
W1FV	80	746	77	172K
K4TEA	160	96	46	8.8K

Multi-Single:

Call	QSOs	Cs	Score
N1MM	1000	212	676K
*K1VR	2251	417	2.81M
K2SX	1934	429	2.48M
*K2WI	2108	450	2.84M
*K3LR	2751	487	4.01M
P49V	5679	323	5.5M

Multi-Two:

Call	QSOs	Cs	Score
*K1AR (at K1EA)	4640	579	8.05M
*K1DG	3682	527	5.8M
KN2M	2742	399	3.27M
*N2NT	4202	574	7.2M
*K2TR	3776	540	6.11M
*N3RS	3907	534	6.24M
*K8AZ	3422	482	4.9M

Multi-Multi:

Call	QSOs	Cs	Score
*K1RX	4855	563	8.2M
*W3LPL	5208	602	9.38M
K4VX/0	5924	497	5.85M
*AA6TT/0	3537	489	5.1M
*K8CC	3625	484	5.26M

*Score Breakdowns:

Call	QSOs	Cs	Score
K1AR (at K1EA) M/2:			
Band	QSOs	Cs	
160:	70	42	
80:	405	80	
40:	1040	117	
20:	1436	128	
15:	1225	113	
10:	464	99	
TOTAL:	4640	579	8.05M

K1DG M/2:

Band	QSOs	Cs	Score
160:	77	46	
80:	217	66	
40:	729	103	
20:	1149	111	
15:	1113	108	
10:	397	93	
TOTAL:	3682	527	5.8M

KM1H (KQ2M op) S/O:

Band	QSOs	Cs	Score
160:	48	37	
80:	252	56	
40:	365	71	
20:	904	87	
15:	864	97	
10:	306	70	
TOTAL:	2739	428	3.51M

KS1L (K1CC op) S/O:

Band	QSOs	Cs	Score
160:	25	17	
80:	173	47	
40:	460	78	
20:	753	79	
15:	864	81	
10:	377	80	
TOTAL:	2652	382	3.0M

K1RX M/M:

Band	QSOs	Cs	Score
160:	69	42	
80:	717	80	
40:	980	113	
20:	1474	112	
15:	1283	118	
10:	432	98	
TOTAL:	4855	563	8.2M

K1VR M/S:

Band	QSOs	Cs	Score
160:	36	29	
80:	186	52	
40:	535	86	
20:	569	89	
15:	738	88	
10:	187	417	
TOTAL:	2251	417	2.81M

N2NT M/2:

Band	QSOs	Cs	Score
160:	76	50	
80:	475	74	
40:	893	112	
20:	1082	114	
15:	1124	122	
10:	532	102	
TOTAL:	4202	574	7.2M

K2TR M/2:

Band	QSOs	Cs	Score
160:	74	46	
80:	267	66	
40:	750	106	
20:	1109	111	
15:	1214	116	
10:	362	95	
TOTAL:	3776	540	6.11M

K2WI M/S:

Band	QSOs	Cs	Score
160:	84	44	
80:	380	71	
40:	346	81	
20:	579	94	
15:	449	80	
10:	270	80	
TOTAL:	2108	450	2.84M

W3LPL M/M:

Band	QSOs	Cs
160:	100	52
80:	540	82
40:	1037	117
20:	1687	122
15:	1271	121
10:	573	108
TOTAL:	5208	602

9.38M

K3LR M/S:

Band	QSOs	Cs
160:	54	39
80:	127	58
40:	501	94
20:	892	101
15:	721	107
10:	456	88
TOTAL:	2751	487

4.01M

N3RS M/2:

Band	QSOs	Cs
160:	59	43
80:	202	62
40:	811	108
20:	1270	112
15:	1110	112
10:	455	97
TOTAL:	3907	534

6.24M

N6BV/1 S/O:

Band	QSOs	Cs
160:	42	26
80:	159	48
40:	492	78
20:	760	77
15:	969	88
10:	229	68
TOTAL:	2651	385

3.06M

AA6TT/0 M/M:

Band	QSOs	Cs
160:	44	22
80:	273	65
40:	874	99
20:	987	111
15:	1056	100
10:	3037	927
TOTAL:	35377	4897

5.1M

K8AZ M/2:

Band	QSOs	Cs
160:	38	26
80:	176	59
40:	606	99
20:	1059	104
15:	1084	104
10:	459	90
TOTAL:	3422	482

4.9M

K8CC M/M:

Band	QSOs	Cs
160:	28	20
80:	180	56
40:	635	101
20:	1372	113
15:	1044	109
10:	366	85
TOTAL:	3625	484

5.26M

Single Op Single Band:

Call	Band	QSOs	Cs	Score
KF4HK	160	34	28	2.8K
NV3V	75	80	43	10.3 K
K9UWA	75	137	63	26K
W0OSK	75	63	36	6.8K
K1UO	40	504	98	147K
ZF2ND	40	2067	59	
K5MR	20	930	130	
W2HPF	15	1091	125	409K
W0UM	15	2204	133	879K
KO4QW	10	1200	122	
K4XS	10	1439	144	621K

Score Rumors

ARRL DX Contest SSB

Single Op:

Call	QSOs	Cs	Score
K1DG	2926	474	4.1
K1FWF	245	162	119K
KE2NL	1548	372	1.7 M
K4VX	1457	352	1.5 M
(AA0CR op)			
N5RZ	2099	415	2.7 M
N6BV	2854	475	4.06
NA8V	2107	407	2.57
W9RE	2557	456	3.5 M
WS9V	1366	330	1.35 M

Multi-Single:

Call	QSOs	Cs	Score
KB1AOL	178	93	49K
AD1C	2473	530	3.92 M
K1VR	2264	505	3.43 M
KE2AY	2210	505	3.32 M
K3CP			1.46 M
NE3F	1604	422	2.03 M
W3GNQ	1427	403	1.72 M
W7RM	1786	271	1.38 M
K8AZ	2670	534	4.27 M
KW8N	32363	510	3.6 M
KS9K	2460	519	3.82 M
AA8U	2513	438	3.3 M
VP5H	6907	341	7.1 M

Single Op Low Power:

Call	QSOs	Cs	Score
VE3RM	1234	311	1.12 M
AA2U/QRP	795	298	710K
KQ3V/QRP	579	248	431K

Single Op Assisted:

Call	QSOs	Cs	Score
AA1EY			221K
KC1F	1866	430	2.4 M
WA1G	306	224	205K
K1TO	2134	487	3.1 M
W2GD	995	414	1.23 M
WR3E	2068	436	2.7 M
K3WW	2184	537	3.51 M
K3ZO	2286	403	2.76 M
N4RJ	2859	550	4.71 M
K4VUD	1122	288	967K
N8ATR	1259	457	1.72 M
TG9AJR	3003	230	2.07 M

Multi-Two:

Call	QSOs	Cs	Score
K1AR	5527	645	10.1 M
KN2M	2687	478	3.8 M
K2TR	3949	599	7.04 M
K5NA	3065	526	4.83 M
N3RS	4103	616	7.58 M
K0RF	3430	471	4.99 M
6D2X	13861	348	14.4 M

Multi-Multi:

Call	QSOs	Cs	Score
K1RX	3976	596	7.1 M
N2RM	6212	710	13.2 M
K3ANS			4.7 M
W3LPL	5470	689	11.3 M
K5XI	3625	543	5.9 M
NK7U	3624	427	4.6 M

Score Breakdowns:*K1AR M/2:**

160	46	35
80	252	72
40	409	92
20	1864	158
15	1542	146
10	1114	142
TOTAL	5527	645

10.1 M

AD1C M/S:

160	26	23
80	181	63
40	226	78
20	783	125
15	657	117
10	600	124
TOTAL	2473	530

3.92 M

K1DG S/O:

160	29	25
80	173	61
40	166	65
20	858	115
15	1043	113
10	657	95
TOTAL	2926	474

4.1

K1RX M/M:

160	33	27
80	325	78
40	169	74
20	1514	147
15	1033	135
10	902	135

K1TO S/A:

160	28	23
75	113	54
40	95	67
20	753	117
15	752	23
10	393	103
TOTAL	2134	487

3.1 M

K1VR MS:

160	36	27
80	91	55
40	123	70
20	831	121
15	577	113
10	606	119
TOTAL	2264	505

3.43 M

N2RM M/M:

160	75	49
80	402	88
40	516	104
20	1781	164
15	2092	156
10	1346	149
TOTAL	6212	710

13.2 M

K2TR M/2:

160	37	33
80	207	73
40	200	77
20	1217	147
15	1627	142
10	661	123
TOTAL	3949	599

7.04 M

W3LPL M/M:

160	65	43
80	365	86
40	442	101
20	1882	166
15	1700	154
10	1015	139
TOTAL:	5470	689

11.3 M

N3RS M/2:

160	37	31
80	222	70
40	230	90
20	1196	145
15	1614	145
10	804	135
TOTAL	4103	616

7.58 M

N4RJ S/A:

160	32	29
80	93	56
40	144	77
20	721	132
15	1161	127
10	708	129
TOTAL	2859	550

4.71 M

N6BV S/O:

160	25	21
80	169	55
40	140	65
20	916	124
15	838	109
10	766	101
TOTAL	2854	475

4.06

K8AZ M/S:

160	28	24
80	102	57
40	140	76
20	780	126
15	1120	132
10	500	119
TOTAL	2670	534

4.27 M

KS9K M/S:

160	24	20
80	94	54
40	148	75
20	540	123
15	1218	131
10	436	116
TOTAL	2460	510

3.82 M

THE CLUB RESOURCES PAGE

The Place to Find Club Information

DUES are due at the April election meeting, which begins our club "contest year", with a grace period until the end of June. Membership in the club will lapse at the end of the grace period if dues are not paid up. In order to re-join the club, a lapsed member must attend a meeting, like any new member, and be welcomed back into membership, or may become a subscriber to the Scuttlebutt by paying up (see below). Club members who move out of club territory and so are not eligible to contribute to club aggregate scores automatically become subscribers. New members who join at the last meeting of the club's contest year (February) are credited with dues for the following year (that is, the contest year beginning that April). You can tell if you owe dues by checking your 'Butt mailing label. Only paid-up members are eligible to contribute to the club score in contests.

FAMILY MEMBER Members of the same family living at the same address may elect to receive only one copy of the Scuttlebutt. One member of the family must pay full dues, enabling the rest of the family to join as family members. Being a family member is currently free.

STUDENT MEMBERS Full-time students are eligible for dues at half the regular rate.

SCUTTLEBUTT SUBSCRIBERS Anyone may subscribe to the club newsletter, the Scuttlebutt. A subscription currently costs \$10 per year. At the present time, overseas subscriptions cost the same as domestic (we have very few overseas subscribers). The subscription period begins at the beginning of the club year, in April. New subscribers who begin their subscriptions after the December issue are considered to have paid for the following year (that is, they receive as many issues as new members joining at that time do). You can tell if your subscription is current by checking your 'Butt mailing label. The grace period for late subscriptions is the same as for late memberships.

SCUTTLEBUTT ARTICLES should be sent to the Scuttlebutt editor, Paul Young, K1XM, 11 Michigan Drive, Hudson, MA 01749, home phone (508)562-5819. The deadline for each issue is usually three weeks before the next meeting.

CLUB JACKETS We are looking for someone to coordinate club jackets. If you can help contact Ed Kritsky, NT2X, 580 East 17th Street, Apt. 2F, Brooklyn, NY 11226, home phone (718)284-4493.

CLUB QSL CARDS are ordered through John Dorr, K1AR, 8 Anchor Lane, Mt. Sinai, NY 11766.

PACKET NET information is available from Dick Newell, AK1A, 8 Golden Run Rd., Bolton, MA 01740, home phone (508)779-5198, or Dave Robbins, KY1H, Baumann Road, Peru, MA 01235, home phone (413)655-2714.

CONTEST SCORES are sent to the club scorekeeper, Kurt Pauer, W1PH.

CLUB ROSTER appears in the summer issue of the Scuttlebutt every year. Updates are published when members move or change callsigns. If you want a new copy of the club roster, contact the club secretary/treasurer, Charlotte Richardson, KQ1F, 11 Michigan Drive, Hudson, MA 01749, home phone (508)562-5819.

CONTRIBUTIONS The YCCC welcomes your contributions, be it money to help offset the cost of the Scuttlebutt and club operations, scores for the club aggregate score, time spent helping other members, articles for the Scuttlebutt, or presentations at club meetings.

DXCC LIST The club maintains a one-page version of the ARRL DXCC Countries List. To get a copy, send an SASE to the club secretary, Charlotte Richardson, KQ1F, 11 Michigan Drive, Hudson, MA 01749. Complete DXCC rules are only available from the ARRL.

CT by K1EA is available from Bill McGowan, KC1EO, 33 Truell Rd., Hollis, NH 03049. Send \$40 (US funds) to register and receive the latest version. CT phone: (603)465-2392. CT BBS: (603)465-2161 (1200/2400 N81). Visa/MC accepted.

W1 QSL Bureau is sponsored by the YCCC. Keep your account up to date with SASEs, or send a check. Stamps are sold at face value, envelopes are 10 cents each. W1 QSL Bureau - YCCC, PO Box 216, Forest Park Station, Springfield, MA 01108.

ARRL LIAISON For ARRL matters, contact Tom Frenaye, K1KI, PO Box 386, West Suffield, CT 06093, home phone (203)668-5444.

Dues are \$15 per year, payable 1 April. Non-members may subscribe to the Scuttlebutt by sending \$10 to the treasurer: Charlotte Richardson, KQ1F, 11 Michigan Drive, Hudson MA 01749. Subscribers who subsequently become members will be credited as having paid \$10 towards dues.

The Scuttlebutt may be reprinted in whole and in part, except for separately copyrighted articles, provided proper credit is given.

The Yankee Clipper Contest Club (an ARRL affiliated club) holds six official meetings per year, on the Saturday or Sunday afternoon of the first full weekend of every even month, usually in the Sturbridge, Massachusetts area. The deadline for article submission to the Scuttlebutt is usually three weeks before the next meeting date. The next meeting will be on Saturday, April 3, 1993. Attendance at an official meeting is required in order to become a member. Club members congregate on 3830 after contests. The packet frequencies for DX spotting are 144.95, 145.69, 144.93, 144.97 and 144.99 MHz.

Rosters are mailed to all paid members each summer. For more information and/or assistance, contact the area manager nearest you.

Officers:

President	Rich Gelber	K2WR	212-580-1075
VP-Activities Manager	Saul Abrams	K2XA	518-439-5700
Secretary-treasurer	Charlotte Richardson	KQ1F	508-562-5819
Editor	Paul Young	K1XM	508-562-5819

Area Managers:

Area	Call	Name	Home	Work
CT/RI	K1RU	Gene Frohman	203-393-1772	203-386-6137
EMass	N1AU	Bill Santelmann	617-862-1753	508-692-6000
WMass	W1GG	Gary Gaudette	413-443-3404	
VT/NH	K1GW	Glen Whitehouse	603-673-6290	603-627-7877
ME	N1AFC	Peter Archibald	207-767-2169	207-797-8931
NLI	NQ2D	Jim Metcalf	516-744-9422	516-467-4800
NNY	K2TR	Fred Lass	518-355-4813	518-346-6666
SNY/NJ	K2EK	Bill Gioia	914-221-1672	914-697-3250

YCCC
11 Michigan Drive
Hudson, MA 01749

First Class