



Scuttlebutt

No. 88 August 1990

President	Dave Robbins	KY1H	413-655-2714
VP-Activities Manager	Stu Santelmann	KC1F	603-672-2509
Secretary-Treasurer	Charlotte Richardson	KQ1F	508-562-5819
Editor	Paul Young	K1XM	508-562-5819

Captain's Cabin Dave Robbins, KY1H

As many of you have heard, we accepted sponsorship of the W1 QSL Bureau at the last meeting. We are still working out the details and trying to find a new manager. I hope to have more details and a more permanent arrangement before the Boxboro meeting. If you have a desire to help out with the Bureau please contact me, K1KI, or K1XM for more info or to volunteer.

Summer is, of course, antenna season. I am working here to upgrade my antennas for the upcoming contest season. I recommend that you spend a bit of time now to think ahead about what you want to do for contests this year and pick antenna upgrades to help out. I would still expect the sun to be pretty active this year and am working mostly on 10/15/20m, but if you want to experiment with low band stuff you should have a chance to play with different things before they become critical when the sun quiets down.

If you think that you would like to try an operation as a guest op or with a multi please contact your area manager. I would like area managers to help out more with finding stationless operators places to operate. Also if you know you will have a station available or need another op fro a multi you should contact your manager also.

I am working on a plan for intra-club awards for this coming contest season. I have received some sugges-

tions already but am still looking for more. Please send me a letter or message on packet net.

I would like to work out a compromise on my 'Section Meeting' proposal. If those with objections will send me a message on packet or a letter with what might make it acceptable to you I would like to hear about it. I do not want to bring it up again at the Boxboro meeting since I feel that meeting should be a meeting with very little business. It is a good meeting to attract new members and I would rather not tie it up with club politics.

Next Meeting Paul Young, K1XM

The next meeting of the Yankee Clipper Contest Club will be the club picnic on Sunday, August 5, 1990, at Holland Pond State Park, in Holland, Massachusetts, about ten minutes' drive west of the usual club meeting place in Sturbridge. The picnic begins at 11, although you may want to arrive when the park opens at 10 to help reserve our picnic tables. The park has softball and frisbee fields, a shaded picnic area, and a swimming beach on a lake complete with changing rooms and lifeguards, so bring along the whole family. The club will bring at least one barbecue grill; feel free to bring hibachis, lawn chairs, etc. There will be a brief business meeting at 1 pm to welcome new members and handle any other necessary club business.

To get to the picnic, proceed as if you were going to our usual meeting place at the Sheraton Sturbridge by

taking the Mass. Turnpike to the I-84 exit and going south one exit on I-84 to the Sturbridge exit/ From there, take route 20 west through Sturbridge, passing the Sheraton along the way. Note: even if you are coming from the west on the Turnpike, it is quicker to get off at the Sturbridge exit and go west on route 20 than to exit at the Palmer exit. Between Sturbridge and Brimfield, route 20 crosses a bridge over a lake. After crossing the water, you will note a big brown park sign on the left. Turn left at the sign saying "Holland 4 miles". Follow this road for about 3 miles, and then follow the park signs by turning right on Dug Hill Road opposite the town sand pit on the left. To enter the park, turn right at the stockade fence and sign for the recreation area. This will bring you to the main gate and parking area. The park charges \$3 per carload for parking.

If you are coming from the west along route 20, you will see a Holland Pond State Park sign indicating where to turn right, then follow the directions above.

The meeting dates for the rest of 1990 are:

DATE	DAY
August 5	Sunday
October 13-14 - Boxboro	
December 2, 1990	Sunday

Secretary's Report Yankee Clipper Contest Club

The June, 1990, YCCC meeting, held at the Sheraton Sturbridge, in Sturbridge, Massachusetts, and chaired by club President Dave, KY1H, attracted 73 members and many guests. After introductions of those in attendance, the Treasurer's Report was presented, showing a balance of \$1948.11. The club welcomed 9 new and returning members:

Jason Corriveau, N1GKI
 Rich Besitka, KA1HGY
 Dick Everhard, KC1IY
 Lou Maglione, KS1L
 Len Casacalenda, KV1P
 Peter Sterling, K1TEV
 Jim Cain, K1TN
 Henry J. Kiernan, KF2O
 Tom Georgens, W2SC

After the new members were voted in, a long discussion of the proposed By-Laws changes eventually resulted in both proposals being voted down. Following that, several members had various announcements. Marty, NB1H, is now working at HRO. Craig, NX1G, announced that **Ham Radio** had been bought out by **CQ** and that the June issue is the last issue of **Ham Radio**; subscribers will receive new or extended **CQ** subscriptions. Several ZA rumors were discussed, the most likely, or least unlikely, being that HA5PP and HA5WE have a license, or alternatively, that an SV team has licenses. Work it if you hear it...

After the break, Ken, K1EA, gave an update on CT features. Some 900 copies of the software have been sold, with the resulting money going to improve the packet network with radios, antennas, computers, and preamps. The packet sysops held their meeting before the regular club meeting. Current work is concentrated on improving high-bandwidth networks and links.

Rich, K1CC, then talked about current business before the ARRL Contest Advisory Committee, and solicited comments on several current proposals:

- Modify the multi-single ten-minute rule (to five minutes or to a maximum hourly number of band changes)
- Shorten DX contests, limit the number of hours a single-op may operate, or introduce a new "sprint" category
- Prohibit soliciting contest contacts outside of the contest period
- Move the time period of Sweepstakes
- Add a slow-speed CW Sweepstakes band segment
- Swap the phone and CW Sweepstakes weekends
- Attract more DX participation to the ARRL 160 Contest
- Change club competition rules
- Attract new people into contesting, perhaps by a handicapping system
- Promote computerized log formats and provide incentives for submitting computerized logs
- Announce the methods the ARRL uses to check logs

Members with ideas on these issues should contact Rich, K1CC, in the New England Division, or Allen, N2KW, in the Hudson Division.

Ed, NT2X, then introduced Yuri Brazhenko, one of the organizers of the 1S0XV Spratly Dxpediton although a non-ham, and interpreted for him. Yuri reported that the operators made about 44,000 QSOs, mostly with the US and JA. They are looking for donations to help pay off the \$37,000 cost of the trip. American donations can be submitted to INDEXA via John Parrot, W4FRU. The team hopes to return in the fall if the costs for this trip have been repaid by that time. Yuri also had some interesting photographs of the antennas and tents set up on the barren sand cay (slides were still being processed), and some other souvenirs of the trip.

After a short break, Tom, K1KI, introduced Bob Brough, KA1CRX, manager of the W1 QSL BURO. Tom and Bob discussed the operation of the BURO and told BURO anecdotes. As of June first, the Mt. Tom radio club gave up sponsorship of the BURO, and Tom and Bob discussed what is involved in sponsoring it, and proposed that YCCC take over sponsorship, which the members voted to do. For the foreseeable future, this will most likely only involve helping to find volunteers to sort letters. Several members volunteered at the meeting. Prospective volunteers should contact Tom or Bob.

Following this, Paul, K1XM, and Charlotte, KQ1F, showed slides of their V63, KC6, and P29 DXpedition, including the operation as KC6AA for the CQ WW CW last fall with Ed, NT2X.

After the meeting, many hungry members went to dinner at Rom's.

Respectfully submitted,
Charlotte L. Richardson, KQ1F
Secretary/Treasurer
8 June 1990

A Killer 6-Meter Array "The Unfair Advantage"

Fred Stefanik, N1DPM

(reprinted from the May, 1990, *Zero Beat*, newsletter of the Hampden County Radio Association, Inc., of Springfield, MA.)

Background:

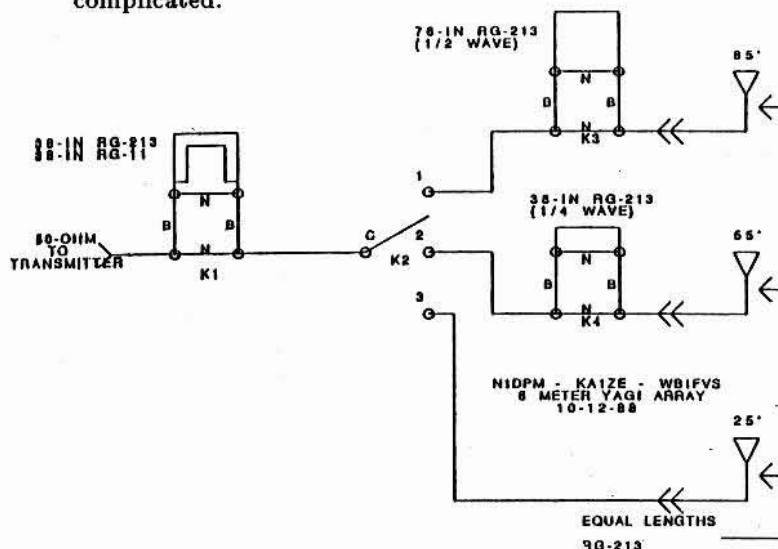
A pair of 7 element 20 foot boom KLM yagis at 70 feet just wasn't enough to "tame" the 6m band from the multi-op station of KA1ZE. As most of you club members know, Stan and I like to put up the "big stuff". The KLM's just didn't qualify. Our 6m op Tom, WB1FVS, wanted to be the "king of the hill" on 6. He remembered the array that he and Stan put up in September of '83: 3 Cushcraft boomers. Tom thought this array was fabulous. The antennas were stacked one over another at 85, 55, and 25 feet. They were switch selectable, either top antenna, or bottom pair. These old antennas were still available and they also fit the "big stuff" category being 6 elements on a 34-foot boom. After seeing the presentation on big 6m arrays at the Mid-Atlantic VHF conference by Dave Olean, K1WHS, my evil-scheming mind was fully engaged.

Objective:

Make a 3-yagi 6m array with ultimate switching flexibility and performance. Switching and power division/matching should be done to provide all possible combinations.

First: Any single antenna for quick direction changes.
Second: any pair of antennas, top and middle, middle

and bottom, top and bottom, for +3dB of gain and a somewhat lower angle of radiation. The top and bottom position would have somewhat larger side-lobes vertically due to their spacing. This could be important along with the following selections because of the arriving angle and takeoff angle of signals due to different types of propagation such as E-Skip, double-hop E, F2, meteor scatter, aurora, tropo and ground-wave. Third: all 3 yagis for +4.77dB of gain and a low-clean angle of radiation. Fourth: To take care of utilizing all the array gain at a high angle add an 11 degree selectable uptilt (electrically steered) to the top or bottom pair or all three yagis and, 28 degrees for the outside pair. This sounds like a lot! It really isn't that complicated.



Switching system:

To accomplish our intended goals would require some coaxial relays to be mounted on the tower. These relays required are 1 3-position capable of having any of the positions energized at the same time and 3 4-port coaxial transfer relays. These were all obtained at fleamarkets for less than \$50 each. Referring to figure #1, the 3-position switch (K2) is used to select each of the 3 antennas. One of the transfers (K1) is used to select (insert) a quarter wave matching transformer to provide the matching/power division to the multiple antennas.

Here's a little math:

1 antenna = 50Ω . 2 in parallel = 25Ω . And 3 in parallel = 16.6Ω . As shown in many handbooks, a transformer needs to be $1/4$ wave long and also the mean impedance. This is found by taking the square root of the product of the input and output impedances. So, for 2 antennas, input impedance of 50Ω and output impedance of $25\Omega = 1250$. Take the square root = 35.4Ω . Now 3 antennas, $50 \times 16.6 = 830$. Square root = 28.8Ω . Now just try to find 35 or 29 ohm coax! Here's the trick, it involves a slight compromise and some ingenuity. First we can only "switch in" one transformer it needs to be halfway between the

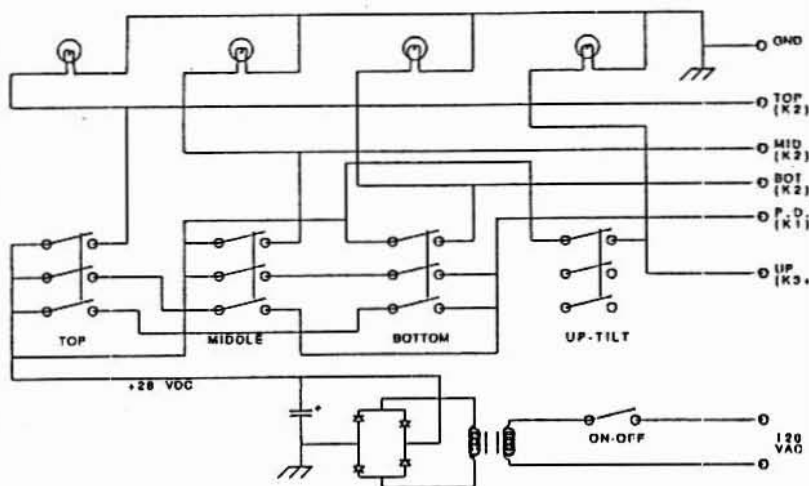
desired 35 and 29Ω, or 32Ω. This means that if the transmitter was a perfect 50 ohms source, and the antenna a perfect 50 ohm load, the transformer would be a mismatch of (SWR) 1.106 to 1 for two antennas, and 1.103 to 1 for three antennas. This means that for one kilowatt forward, the reflected power would be 2-3 watts! This is certainly acceptable. Now the ingenuity. Since the only thing frequency dependent about a coax transformer is its length, you can treat coax like resistors when you put the pieces in parallel with each other. So take out your "resistors in parallel" formula, and calculate what happens with a 50 ohm piece of line in parallel with a 75 piece of line, RG8 and RG11. 30Ω! The mismatch will now be 1.18 to 1 for 2 antennas, and 1.04 to 1 for 3 antennas. Close enough! Some coax fittings and T connectors make up this assembly.

Now for electrical steering:

As stated in chapter 6 of *Yagi Antenna Design*, by Jim Lawson, W2PV, two basic uptilt angles are obtainable, 11 degrees and 28 degrees. These are accomplished with a "delay line", a piece of coax in series with the upper antenna of a pair. The two best and easiest are 90 degrees, or 1/4 wavelength, for a tilt of 11 degrees, and 180 degrees, or 1/2 wavelength for a tilt of 28 degrees. Well, being that we have three antennas, not two, in order to make the transition smoothly we will, via K3 and K4 transfer relays, insert a 1/2 wave into the top line, and 1/4 wave into the middle. The book also shows the array gain only suffers less than 1 dB for the 28 degree tilt. With this combination, by selecting all three, top and middle, or middle and bottom, we can steer the array up 28 degrees. The power supply and switching in the shack is accomplished with four push-on, push-off buttons and is connected to the relays on the tower with standard 6-conductor rotor cable. The schematic for this box is shown in figure 2. With the switches wired in this fashion, it logically unravels the truth table in table 1 and provides the operator with an easy means of antenna selection.

Select	Truth Table			
	K1	K2	K3	K4
Top	N	1	N	N
Middle	N	2	N	N
Bottom	N	3	N	N
Top pair	B	1+2	N	N
Bottom pair	B	2+3	N	N
All three	B	1+2+3	N	N
Up-tilt on any pair or all three	B	choose pairs or all three as above	B	B

Table 1



Results:

In one short word, **WOW!** All 3 antennas are rotatable, the top 360 degrees, middle and bottom 300 degrees on sidearms. For long-haul tropo, all 3 are the best by about 5 dB (4.77 to be exact). K8III is consistently S5 to S7 from Ohio. The other types of propagation take some experimenting. The uptilt works really well at nulling ground noise. Typically for double-hop E, or F2, all 3 are the best. For meteor scatter, single hop E, and aurora, either a low antenna or a combination with uptilt works good but the conditions are *never* the same so constant experimenting is called for. Sometimes this antenna gives you the "unfair advantage". The best example is during some E-skip last summer, a station 1,000 miles away with any single antenna was S5. With top or bottom pair, was S4, with all 3 was S3. The 11 degree uptilt added about two S units to these multiple antenna combinations. The last remaining combinations, top and bottom, proved to be very interesting. Top and bottom performed somewhere between S3 and S4, about what you would expect. Now, add our magic ingredient, the "unfair advantage", 28 degree uptilt, and with this combination, for these conditions, the signal is now S9+20 to +30dB! This is absolutely amazing, but it sure makes it easier to break those pileups! This has been the most drastic difference seen with this array although typically it has a dynamic range of about 10 dB. So, with the correct combination, 10dB is a major unfair advantage.

CT and Desqview Jim Metcalf, NQ2D

This is directed at those of you running a 386 processor, which I am. My assemblage consists of a 16 mhz SX board with 2 meg of ram. In addition to my contesting, I also run a 24 hr TCP/IP switch with multiple ports. I run all of the applications in Desqviews

QEMM extended memory management system. I am delighted with the results that I have had. I run 3 to 4 applications at any one time with no observable speed change.

Recently, I decided to try running K1EA's logging program "CT" in Desqview. During the SSB portion of the WPX is worked just marvelous. There was no interference with other applications being run in the background. There was no decrease in the access time for any of the log checking functions.

I will be operating the CW portion and decided to try it on a dry run before the start. I noticed that when sending CW, there seemed to be a shallow hesitation at times. Occasionally, a character would also be missed. The trouble was directly related to CT running in Desqview. The processor may be fast, but will also miss on the CW sending from the function keys almost every time.

The moral of the story is, if you want to use your computer for other applications while using CT, you can. Just remember that your memory keyer will be needed during CW. Then again, if you're real serious about it you won't need anything but CT anyway. My case is an exception since I run a multi-port packet switch on one system.

W1 QSL Bureau – Pileup City! Tom Frenaye, K1KI

As part of the transition of the W1 QSL Bureau to the YCCC, it seemed like an excellent opportunity for me to take a close look at how it all worked. No reason for an academic view; I decided to roll up my sleeves and dive in.

So, there I was, taking a few minutes off from work to meet Bob Brough, KA1CRX (retiring bureau manager) at the Forest Park Post Office during lunchtime. If you've ever wondered what Forest Park was, it's a section of Springfield southeast of the downtown area where one of the bureau managers lived quite a few years ago. The post office is a fairly small nondescript building on a busy street, not the same as the big PO in downtown Springfield.

Bob arrived just ahead of me and we headed inside. Yup, there's Box 216, the one all of the incoming QSL Bureau cards are addressed to. But it's not exactly a big one – measuring about 3" x 5", good for a hundred cards or so. Turns out we have to go to a special service window to pick up the mail. The little box is just a formality; you have to pay for it in order to get the 'bag service' for people who receive lots of mail.

We met the guy who accumulates the mail for the Bureau and he disappeared into the back room. About five minutes later he returned, pushing the Post Of-

fice's version of a grocery cart (bigger) filled to the top with boxes and big cloth bags of mail. So we filled (completely) the trunk of my car with the boxes and bags. This was less than a week's worth of mail, should be interesting to see what was inside! So, now I knew how the pick up at the PO worked, Bob headed home and I went back to work to worry about the fine points of managing T-1 lines and Ethernets, but wondered what it was going to be like opening all the mail...

After getting home and unloading the Bureau mail from the car (five trips in and out of the house), I settled down to the business of opening it all. I get a lot of mail, sometimes too much, but this was different!

YU: The first one I decided to open was the biggest – 38 pounds! Here was a big (18" x 36" x 8") white woven plastic bag, impossible to tear, tied with tough string, and sealed with a lead slug (like they used to seal the cover of your electric meter). It had a cardboard tag attached with a reinforced metal eyelet. Inside it was crammed with Yugoslavian QSL cards, not the fanciest color photos on them, but they do QSL. This bunch (38 pounds at 150/cards per pound is about 5700 QSLs) had cards from 1987 through 1990 at first glance.

ARRL: There were two big boxes (18 pounds) sent 4th class from the ARRL containing QSLs, about 50% USSR and at least a hundred each from Spain, Columbia, and South Africa. The Russian cards were from 1986-88 mostly. I even pulled out a few for myself – sorters get their cards very quickly. Turns out that the outgoing QSLs in UA, EA, HK, and ZS don't separate their cards by US bureau, they bundle them together and send them to Newington (where most of them get sorted and then sent out to the various ARRL incoming bureaus).

LA: Another 3 boxes (13 pounds) arrived from Norway, labeled "used QSL cards" on the outside, sent about a month ago. They were nicely packaged, double wrapped in brown paper and cardboard. A quick glance through some of them finds a card for AR1AE (bad call, will send it back), several for W200 special event stations (QSL via W1xxx), a bunch of cards that were missorted, a card returned from LA4LX marked 'silent key' and some nice color photo cards from LA1H (LA1H appears to be using the same photo he did 25 years ago when I worked him as a Novice!). Sorting doesn't appear to be an exact science, either overseas or locally. If you get a missorted card, please send it back to it can go to the right person.

G: The three bundles (another 10 pounds) from the RSGB were tied tightly but they weren't wrapped as well, the brown paper was torn, wasn't taped and cards were visible through the two open sides. They were sent about six weeks ago at the "printed paper rate".

Again, there were a few missorts, mostly for W4s. One standout card was from GIOJOB with a photo of a 'stoat'. What's a stoat? It says a stoat is white, larger than a weasel and has a black tip on its tail. Nice card from GOGZI for a 6M contact with AF1T. Many of the calls look familiar, looks like YCCC will collect about 50% of them! A lot of G QSLs are from as recent as May 1990.

JA: The cards from Japan arrived in 8 one pound light green packets with pre-printed customs tags on the packet. As usual, many of the cards have glossy full color photos of people, radio shacks, YLs, mountain scenes, weird art and Japanese cultural items. Hard to beat the variety of interesting photos! Unlike most of the other countries, the JA cards are all the same size, making the sorting a bit easier.

USPO: There was a two pound 'official business' package from the US Post Office, addressed to "Radio League, c/o Heather Hall" (Heather was the Bureau manager a couple of years ago). Turns out that the Post Office knows (almost) what to do when they find a bunch of QSL cards from a broken open package, either send them to the Bureau or ARRL (or both). This bunch appears to be outgoing DX cards from N4UH and N1WR/4; hope the PO didn't lose too many of them. They're on their way to the Outgoing QSL Bureau in Newington.

ZL: Four small packets (total one pound) with nice postage stamps arrived from New Zealand, marked "used radio cards, value = NIL", even a couple of 3D2 cards included. One QSL was N1AU's QSL to ZL1BOQ. 'BOQ added a sticker to the back with the message, "Due to the volume of unwanted QSLs via the Buro, I no longer have the time or financial resources to cope. However, the details shown on your card coincide with my log. The contact is therefore confirmed. Your report is 5-9. 73 de Derek."

PY: PT7NK decided not to go through his own outgoing QSL bureau; he sent a one pound packet directly to the W1 bureau stuffed with only his own cards. The packet was torn open but not enough to cause a problem, and he added nice stamps to the outside for postage.

9K2: The Kuwait bureau sent a packet (one pound) marked "printed articles"; again, nice stamps were on the outside. There were a lot of 9K25 special prefix cards (oversized) and a bunch from 9K2CS of 7O1AA fame.

OA: From Peru the one pound package was sent "via suferficie" (surface rate?) and marked "Tasa Postal reducida de 50%" which I think means they were sent at a 1/2 price rate.

ZS: The 1/2 pound package from South Africa had

interesting stamps. Under the big black postmarks it looked like several varieties of mushrooms... Cards inside were from all over ZS, plus V51 and ZS9A. A card from ZS6AOO was returned to the sender with the note that it wouldn't be delivered because he wasn't a member of the SARL (ZS equivalent of the ARRL). Under IARU agreements, all countries should forward cards to all amateurs, not just members, but a few don't.

HK: Another pound arrived from Columbia, with no sign that the brown paper and tight string had been disturbed as part of the search for cocaine. The first card inside was from HK6LSA and had a photo of a very shapely female coffee picker advertising "Cafe de Columbia" and "La Tierra de Cafe Suave". A couple of cards from KY1H to 5L7U were returned - they should have been sent to the EL bureau by the ARRL Outgoing Bureau.

YO: Inside a clear plastic envelope from the US Post Office was a torn piece of paper with the W1 QSL Bureau's address on it. The return address was of the Romanian QSL Bureau. A note stated, "Arrived at US Customs damaged." Sure was, there was just the torn piece of paper with the address, no cards in sight. The folks in Romania have had a tough time in the last year; this seems to confirm it. Maybe the PO will discover the cards in another room, and remember to send them on to the nearest QSL bureau or to ARRL...

Envelopes: Enough for the boxes, bags and packets, on to the 53 envelopes (three pounds) of all shapes and sizes. Here are a sampling:

One from N7ZZ had treasured QSLs for a few people who worked the elusive DX trophy of K7SS/PTI. While QSL bureaus don't normally handle US to US QSLs, these cards are marked "pending DXCC credit", so I'll send them on to the sorters and let them decide what to do with them!

A big envelope with one card from Dublin's EI2WW special event station commemorated "the Heritage of Whiskey".

A couple of envelopes with QSLs sent out by the Bureau were returned marked "addressee unknown" because someone had moved and forgot to tell us. We'll do some research and track down what we can. Remember to keep the Bureau up to date.

Addresses on the envelopes varied considerably, depending on what reference people used. They included W1 QSL Bureau, First Call Area QSL Bureau, HCRA, MTARA, MTRA, Area One QSL Buro, and simply QSL Bureau. The first one with YCCC's name on the envelope came from K1EPT with a check to cover envelopes and stamps, and even a donation to help ends meet! Guess the word of a change in bureau sponsor-

ship is spreading quickly.

A letter from someone with a 2x1 call stated, "we've decided to give up ham radio for personal reasons. Send cards back to their owners." An SWL from the USSR sent one card for N1BSJ asking for a direct card in return. Many envelopes just included SASEs to be sent on to the sorters for future QSLs.

One person wrote to tell us what his callsign was (the previous envelope had SASEs but no callsign to match QSLs with!). Several enclosed notes saying "You're doing a great job" - they'll be sent on to the sorter who deserves the credit. One postcard arrived from a W1 with the note, "Please send my cards, I'm trying to make DXCC finally." We'll see if we can pry a little postage out of him.

A postcard intended for a sorter sent from a YCCC member noted that "I used to do a lot of contesting, please send cards at least every six months, haven't set up the station at the new QTH yet." One reminder sent to a K1 portable 4 who has a bunch of cards on file was returned marked unknown. His cards will never catch up with him.

There was a QSL offer from an RC2 station who 100% promised UC2 cards for 2 IRCes (any UC2, RC2, etc.). A notice of the address change for the CO3/CM3 QSL bureau came right ahead of the request from a 'future' PY ham who wanted to have a transceiver donated to him now. Another announced the JA Samurai Award and a nicely stamped envelope from 9M2 had information on the 1990 SEANET convention on November 10-12 in 9M8. Looked enticing!

Several people sent in postage in response to the sorter's message that they were now out of envelopes or stamps, and a couple of others wanted to know if we had cards waiting or not. One AA5 sent in a bunch of US to US cards; they'll be sent back to him.

In all, there were 96 pounds of cards. That translates into about 14,000 QSLs at 150/pound! Not bad for one trip to the PO box. Of course, there are a few more steps to follow before you get your cards, like accounting for the incoming postage, checks, cash and SASEs, following up on the numerous questions, doing the primary sort (by first letter after the "1" in the callsign), and forwarding the postage credits and cards to the sorter for your letter. Then he or she has the job of doing the final sorting, envelope stuffing and mailing.

More detail on these steps next time, if I find the time to write about it! In the mean time, if you'd like to help out in some way (not every job involves sorting, either), please contact KY1H (or the new Bureau manager when he/she steps forward) and let him know.

Excess Cargo

FOR SALE: TS-940S w/AT, 2.1Kc filters, IF-232C, \$1595. Rohn 45G, 120' w/guys, torque arms, etc., \$1300. Ameritron AL-1200 w/10M, \$1200. CushCraft 10-3CD, \$80. CushCraft 10-4CD, \$90. HyGain 204BAS, \$230. HyGain 155BAS, \$210. HyGain HDR-300 rotor, \$450. 2 Element 75M yagi, 93' elements, 33' boom, a tank, \$1500. ComTek ACB-4-80M Phased Array Switchbox, \$275. EIMAC 3CX3000F7 new, unused, \$700. 10-1000pF 10KV Jennings Vac Var, \$200. 10-300pF 10KV Jennings UCS300, \$80. HyGain Ham-M rotor, \$200. HDBX-48 tower, \$400. Amphol 6 pos. UHF antenna switch w/N-connectors, \$45. Peter Dahl transformer 7.5VAC 55 A, multi-tap primary, \$85. Numerous high-power amp parts, call. Johnson Viking Matchbox, \$45. Heathkit Cantenna, \$20. Marconi 6960 RF Digital power meter to 20 GHz, \$1500. Hewlett-Packard DraftPro Plotter A-D size, \$2200. Epson FX-286 dot matrix printer, \$150. Brother HR-15 daisy-wheel printer, \$150. Vacuum relays, call. MN program version 2.0, \$25. ON4UN programs, \$10. Lotus 1-2-3 manual, \$10. Call Dennis, K8UR/1, (508)529-6330 or (508)529-3416 before 0100Z.

1989-90 Yankee Clipper Contest Club Roster

CALL	NAME	PHONE NUMBERS	ADDRESS
AK1A	Dick Newell	508/779-5198 508/490-8706	8 Golden Run Rd., Bolton, MA 01740
WB1AEL	Shawn C. Kelley	508/464-5818	50 Coal Kiln Rd., Princeton, MA 01541
N1AFC	Peter Archibald	207/767-2169 207/797-8931	PO Box 2288, S. Portland, ME 04106
KC1AG	Bill Shipp	401/438-4548 401/863-3438	19 Drowne Pkwy., Rumford, RI 02916
K1AR	John Dorr	603/434-5661 508/967-1095	2 Baldwin St., Windham, NH 03087
N1AU	Bill Santelmann	617/862-1753 508/692-6000	30 Fairlawn Ln., Lexington, MA 02173-2715
W1AX	Roger Corey	508/329-4676	60 Warwick Dr., Westwood, MA 02090
NC1B	Shawn McCormick	413/786-7966	PO Box 17, Feeding Hills, MA 01030
K1BB	Guy Huse	508/460-8345 617/981-3536	47 Woodridge Rd., Marlboro, MA 01752
K1BG	Bruce Blain	508/433-6363 617/938-8444	34 Bancroft St., Pepperell, MA 01463
W1BIH	John H. Thompson	203/489-7697	PO Box 1, Torrington, CT 06790
W1BK	Charles McCarthy	508/562-5622	128 Forest Av., Hudson, MA 01749
W1BR	Roger Prince	508/393-3413 508/798-8576	66 Washburn St., Northboro, MA 01532
AD1C	James J. Reisert	508/635-9944 508/568-4440	284 Great Rd. C1, Acton, MA 01720
AG1C	Ted Goodhue	603/434-0399 603/885-9564	12 Hovey Rd., Londonderry, NH 03053
KM1C	Bill Pedersen	508/371-2153 603/424-2444	290 Rutland St., Carlisle, MA 01741
KA1CB	David Gerns	603/382-6364 508/657-8650	3 Rolling Hill Av., Plaistow, NH 03865
W1CB	Stephen A. Smith	508/369-6985 508/369-8780	290 Powder Mill Rd., Concord, MA 01742
K1CC	Rich Assarabowski	203/875-0166 203/727-7438	306 Vernon Av., Vernon, CT 06066
N1CC	Jim La Porta	518/456-4845 518/869-9739	21 High Dune Dr., Albany, NY 12203
KC1CE	Gregory J. Iannucelli	401/942-2046 401/942-2046	100 Royal Av., Cranston, RI 02920
KA1CI	Richard Reed	203/429-7482	86 Davis Rd., Storrs, CT 06268
KG1D	Lester Kemble	203/872-3099 203/566-4794	14 Grandview Terr., Vernon, CT 06066
KZ1D	Dan J. Brevik	508/460-9059 508/879-2960 x 3645	250 Millham St., Marlboro, MA 01752
WC1D	Richard Lewis	617/491-7765 617/729-7870	47 Chitton St., Cambridge, MA 02138
N1DEA	James R. Henderson	617/259-8738	Giles Rd., Lincoln, MA 01773
K1DG	Doug Grant	603/432-4738 508/658-9400 x 481	144 Kendall Pond Rd., Windham, NH 03087
WB1DGV	Garry P. Anderson Sr.	508/363-5335 508/363-5335	25 Pleasant St., W. Newbury, MA 01985
N1DTG	Terri Corey	401/658-1122	Jencks Rd., Cumberland, RI 02864
KA1DWX	Gordon Durk	508/263-1066 508/632-0667	115 Cobleigh Rd., Boxboro, MA 01719
NY1E	Dick McDuffie	207/727-3796 207/727-3796	RR2 Box 369K, W. Buxton, ME 04093
K1EA	Ken Wolff	508/456-8272 508/435-2000 x 415	221 Old Littleton Rd., Harvard, MA 01451
KC1EO	Bill McGowan	603/465-7229 603/329-5691	33 Truell Rd., Hollis, NH 03049
KA1ERF	Julie Czajkowski	508/885-3841 508/885-3841	N. Brookfield Rd., Spencer, MA 01562
KA1ESR	Karen Poellnitz	508/879-6290 617/732-5420	44 Sunset Dr., Framingham, MA 01701
W1ETH	Paul R. Ryack	413/467-9225 413/536-8924	153 Amherst St., Granby, MA 01033
W1EYT	William Ewing	508/897-0840 617/377-3655	14 Dunster Dr., Stow, MA 01775
KC1F	Stu Santelmann	603/672-2509 508/682-5276 x 173	20 Larch Rd., Milford, NH 03055
KQ1F	Charlotte L. Richardson	508/562-5819 508/568-6588	11 Michigan Dr., Hudson, MA 01749
NJ1F	Brian J. Szewczyk	413/743-5781 413/499-3333	74 East St., Adams, MA 01220
WE1F	Bob Souza	603/437-3815 508/486-5041	17 Hardwood Rd., Windham, NH 03087
KA1FBY	Albert Kinnon	508/851-5079 617/423-3814	113 Lancaster Dr., Tewksbury, MA 01876
N1FJ	Frandy Johnson	413/584-9005	275 Main St., Northampton, MA 01060
W1FJ	Al Rousseau	617/598-3744 207/784-3591 x 246	180 Den Quarry Rd., Lynn, MA 01904
W1FM	Jake Handwerker	617/862-6742 617/271-2000	17 Pine Knoll Rd., Lexington, MA 02173
W1FV	John Kaufman	508/897-5929 617/863-5500 x 4041	47 Durant Av., Maynard, MA 01754
K1FWF	John D. Allen	508/779-6189 508/870-9856	93 Spectacle Hill Rd., Bolton, MA 01740
NX1G	Craig Clark	603/899-6103 603/878-1441	PO Box 83, Greenville, NH 03048
KA1GG	Bob DeCosta	508/763-5539 508/674-4867	Box 64, Rochester, MA 02770
W1GG	Gary Gaudette	413/443-3404 413/494-4049	21 Westview Rd., Lanesboro, MA 01237
W1GIH	Thornton Ash	508/369-9282 508/264-6411	163 Nowell Farme Rd., Carlisle, MA 01741
K1GQ	Bill Myers	603/465-2673 617/492-2000 x 2116	Box 501 Laurel Hill Rd., Hollis, NH 03049
K1GW	Glen Whitehouse	603/673-6290 603/627-7877	1 Pinnacle Rd., Amherst, NH 03031
KB1H	Dick Pechie	203/779-1304 203/824-5157	Box 265, Dayville, CT 06241
KY1H	Dave Robbins	413/655-2714 413/494-2023	Baumann Rd., Peru, MA 01235
NX1H	Paul Terwilliger	603/887-4346 603/742-7363	11 North Shore Rd., Chester, NH 03036
WB1H	Dave Meldrum	508/686-4711 508/671-3044	28 Cedar Ln., N. Andover, MA 01845
KC1HB	Frank L. Chamberlain	207/772-9784	94 Westland Av., Portland, ME 04102
KA1HGY	Rich Besitka	203/269-6395	75 N. Airline Rd., Wallingford, CT 06492
W1HNZ	Bruce Rusch	508/443-0503 508/454-6200	97 Brimstone Ln., Sudbury, MA 01776
WA1HYN	Ed Shekleton	401/647-3619 401/738-5150	208A Hartford Pike, Foster, RI 02825
KB1I	John A. Dority	203/774-4547 203/774-9246	RR 2 Box 447, Danielson, CT 06239
NK1I	Barb Shutt	413/584-2685	269 Main St., Northampton, MA 01060
NO1I	Victor Bennison	603/673-9073	2 Georgetown Dr., Amherst, NH 03031
NS1I	David R. Berthiaume	401/333-2662	15 Orchard Dr., Cumberland, RI 02864
NW1I	Scott Johnson		49 Goodnough Rd., Chestnut Hill, MA 02167
KA1IDC	Ron McElroy	413/743-0515 413/499-5951	129 Outlook Av., Cheshire, MA 01225
W1IHN	Bert Michaud	508/459-6774	43 River Rd., Lowell, MA 01852

CALL	NAME	PHONE NUMBERS	ADDRESS
K1IK	Al Johnson	802/464-5566 802/464-5566	PO Box 77, W. Dover, VT 05356
WA1IML	Bill Hassan	508/533-2896 508/881-7500	6 Henry St., Medway, MA 02053
KA1ION	John R. Fowler	203/272-0470	945 Marion Rd., Cheshire, CT 06410
K1IR	Jim Idelson	617/444-6863 508/692-6200	19 Rolling Ln., Sudbury, MA 01776
K1IU	Jeff Bouvier	401/658-1122 508/626-3030	Jencks Rd., Cumberland, RI 02864
KC1IY	Dick Everhart	603/673-5287	Crestwood Ln., Milford, NH 03055
KS1J	James Bowman	401/767-3900 x 602	50 Walnut Rd., Barrington, RI 02806
KV1J	Eric Williams	508/481-8176 508/250-3696	763 Pleasant St., Marlboro, MA 01752
K1JKS	Bill Bithell	617/595-0122	96 Greenwood Av., Swampscott, MA 01907
W1JR	Jospeh H. Reisert		17 Mansfield Dr., Chelmsford, MA 01824
NK1K	Rusty Lyster	603/772-4593 603/772-2233	101 Watson Dr., Exeter, NH 03833
K1KA	Dave Mackey	603/487-2677 603/644-3555	Box 600, New Boston, NH 03070
K1KI	Tom Frenaye	203/668-5444	PO Box 386, W. Suffield, CT 06093
K1KJT	Edward J. Peters	508/995-2427	29 Greenbrier Dr., New Bedford, MA 02745
W1KM	Greg Cronin	508/428-4205 508/540-8150	172 Old Mill Rd., Marstens Mills, MA 02648
K1KP	Tony Brock-Fisher	508/689-4126 508/687-1501 x 2399	15 Webster St., Andover, MA 01810
KA1KRT	Jay M. Gaudette	413/443-3404	21 Westview Rd., Lanesboro, MA 01239
AK1L	Raymond Tabloski	603/893-0206	30 Hall Farm Rd., Atkinson, NH 03811
KS1L	Lou Maglione	203/284-0322	977 N. Farms Rd., Wallingford, CT 06492
KA1LSZ	Mike Perry	617/861-0759 617/641-3918	24 Grassland St., Lexington, MA 02173
AA1M	Bob Reiser		6 Savin St., Burlington, MA 01803
KN1M	Tony Stokes	207/799-5122	1 Bennett St., S. Portland, ME 04106
NC1M	Hugh Masterman	508/692-8416 508/692-6000	24 Fletcher Rd., Westford, MA 01886
NS1M	Ken Loynes	413/743-3877 413/494-6859	Black Brook Rd., Savoy, MA 01256
K1MBQ	Alan W. Baker	203/245-1198 203/245-9634	29 Beekman Pl., Madison, CT 06443
KA1MDG	John F. Corini	508/779-5424 617/490-6215	22 Laurel Dr., Bolton, MA 01746
W1MK	Robye Lahlum	617/887-5755 617/681-6565	Brookview Rd., Boxford, MA 01921
K1MM	Bill Poellnitz	508/879-6290 617/235-2000	44 Sunset Dr., Framingham, MA 01701
K1MNS	Larry Blowin	603/432-5866 617/329-4050	52 Warner Hill Rd., Derry, NH 03038
KA1MP	Philmore Smith	413/562-4731 413/562-7252	999 E. Mountain Rd., Westfield, MA 01085
NG1N	Bill Toomey	603/886-1120 603/884-7639	4 Twilight Dr., Nashua, NH 03062-1469
KT1O	Steve Wedge	508/692-8501 508/858-8173	6 Vase Hill Rd., Westford, MA 01886
KA1OFC	Paul Bolduc	508/249-4038	RFD 2, Athol, MA 01331
W1OO	Lanny Bailey	207/883-7125	224 Holmes Rd., Scarborough, ME 04074
KM1P	Joseph B. Fitzgerald	203/668-5864 508/791-7545	1210 Newgate Rd., W. Suffield, CT 06093
KV1P	Len Casacalenda	203/354-9085 203/796-5624	14 Bradbury Rd., New Milford, CT 06776
NX1P	Paul Keezer	508/649-9776	46 Oak St., Dunstable, MA 01827
W1PH	Kurt Pauer	603/673-7201	PO Box 754, Amherst, NH 03031
KA1QAS	Scott Cohen		238 Kozley Rd., Tolland, CT 06084
KA1R	Matt Power	617/878-5717 617/253-2538	145 Grove St., Norwell, MA 02061
KR1R	Billy Lunt	413/243-3230 203/666-1541	Main Rd., Tyringham, MA 01264
NE1R	Bob Elliot	401/647-2571 401/232-2600	11 Cooke Dr., N. Scituate, RI 02857
WF1R	Bob McCormick	413/786-7966 203/627-7025	PO Box 17, Feeding Hills, MA 01030
KB1RB	Steven Elkind	617/862-6590 508/568-4127	41 Chase Av., Lexington, MA 02173
KA1RE	Robert K. Adamson	413/443-0856	57 Quirico Dr., Pittsfield, MA 01201
KB1RI	Eric Wagner	508/476-7750 508/870-9559	RFD 1 Box 4763, E. Douglas, MA 01516
K1RM	Vincent Sgroi	203/747-3335	6 Autumn Ln., Plainville, CT 06062
W1RM	Peter Chamalian	203/673-4395 203/665-5422	81 Savarese Ln., Burlington, CT 06013
K1RQ	Dana Cobb	207/655-7780	PO Box 813 Cobb Rd., Raymond, ME 04071
W1RT	Bob DeBragga	203/535-4097 203/535-4097	RFD 1 Box 239, Stonington, CT 06378
K1RU	Gene Frohman	203/393-1772 203/386-6137	52 Ridgewood Dr., Bethany, CT 06525
K1RX	Mark Pride	203/271-2076 203/265-8825	1130 Summit Rd., Cheshire, CT 06410
KR1S	Jim Kearman	203/693-6076 203/693-6076	191 Wright Rd., Collinsville, CT 06022
K1SF	Bob Archambeault	508/885-2704	94 Chestnut St., Spencer, MA 01562
K1ST	Steve Tolf		3 Ridge Rd., Hopkinton, MA 01748
KB1T	John G. David	603/673-9014 603/673-4100	PO Box 1015, Amherst, NH 03031
K1TEV	Peter Sterling	207/799-1519 207/879-4238	PO Box 2382, S. Portland, ME 04106
K1TN	Jim Caln	203/742-7124 203/742-7124	PO Box 42, Andover, CT 06232
K1TO	Dan Street	203/653-2343 203/563-8234 x 4117	10 Petersen Rd., Granby, CT 06035
K1TR	Ed Parsons	603/437-0599 508/960-6722	9 Grandview Rd., Windham, NH 03087
K1TXH	Betty McCarthy		128 Forest Av., Hudson, MA 01749
N1TZ	Bob Czajkowski	508/885-3841 508/885-3841	N. Brookfield Rd., Spencer, MA 01562
NW1U	Paul L. Randazzo	508/649-9262 800/444-0047	12 Turnbuckle Ln., Tyngsboro, MA 01879
WA1UAR	Michael McCarthy	508/692-3525 508/692-0207	91 Dunstable Rd., Westford, MA 01886
KA1UQU	Reg Corey	401/658-1122	Jencks Rd., Cumberland, RI 02864
K1VR	Fred Hopengarten	617/259-0088 617/259-0088	6 Willarch Rd., RFD 1, Lincoln, MA 01773
K1VSJ	Howard Bromberg	401/273-8035 401/231-1000	21 Wingate Rd., Providence, RI 02906
K1VUT	David Clemons	508/947-3784	148 Rocky Meadow St., Middleboro, MA 02346
KB1W	Leonard Bean	413/443-0725 413/494-4325	62 Wellington Av., Pittsfield, MA 01201
W1WAI	David S. Allen	508/443-9867 508/490-7715	22 Saxony Dr., Sudbury, MA 01776

CALL	NAME	PHONE NUMBERS	ADDRESS
W1WEF	Jack Schuster	203/633-2756 203/565-0046	408 Thompson St., Glastonbury, CT 06033
KB1WH	John Sykes Jr.	203/469-5938	196 Beacon Av., New Haven, CT 06512
KA1X	Shirley R. Tabloski	603/893-0206	30 Hall Farm Rd., Atkinson, NH 03811
K1XA	Robert Halprin	203/242-3866	PO Box 310624, Newington, CT 06131-0624
W1XK	Stan Kugler	203/756-6056	147 Grandview Av., Waterbury, CT 06708
K1XM	Paul J. Young	508/562-5819 508/486-5276	11 Michigan Dr., Hudson, MA 01749
KA1XN	Bob Wilson	413/733-3702 617/552-5344	179 Knollwood St., Springfield, MA 01104
W1XS	Thomas A. Bell	508/699-8195 508/490-3536	64 Scout Ln., N. Attleboro, MA 02760
KE1Y	Rolf Seichter	508/851-5338 617/225-1138	80 Lancaster Dr., Tewksbury, MA 01876
WA1YDL	Barry Kasindorf	508/877-4947	8 Maynount Dr., Framingham, MA 01701
K1YR	Louis Cohen	203/393-1473	50 Bethridge Rd., Bethany, CT 06525
AD1Z	William Clemons	617/871-1778 617/871-1778	1140 Plymouth St., Whitman, MA 02382
WA1ZAM	Ed Landry	413/663-8126	140 Cliff St., N. Adams, MA 01247
K1ZJH	Peter Bertini	203/749-7186	20 Patsun Rd., Somers, CT 06071
K1ZM	Jeff Briggs	914/227-5108 212/696-3162	21 Dartantra Dr., Hopewell Junction, NY 12533
KA2AEV	Michael Samanka	212/326-2792	6407 72nd St., Middle Village, NY 11379
KA2CIW	Tom Tiniski	516/884-8912	465 N. Hamilton Av., Lindenhurst, NY 11757
NQ2D	James Metcalf	516/744-9422 516/467-4800	Box 50, Sound Beach, LI, NY 11789
N2DU	Dave Unverhau	518/783-8788 800/222-2345	21 Reisling Rd., Schenectady, NY 12309
WG2E	Carl W. Wedekind	518/489-6652	7 Prospect Av., Albany, NY 12205
K2EK	Bill Gioia	914/221-1672 914/697-2016	RD 7 Rushmore Rd., Hopewell Junction, NY 12533
KA2EYP	Kevin S. Bonnot	603/673-1136 603/434-8234	27 Iris Rd., Milford, NH 03055
KB2HUN	William R. Liporace	518/449-1397	325 Mountain St., Albany, NY 12209
WB2KMY	Doug Sharp	518/370-8799	1197 Hillside Av., A16, Schenectady, NY 12309
N2KW	Allen Singer	718/428-6459	Box 382 Village Station, New York, NY 10014-0382
NJ2L	Rus Healy	203/666-1541	225 Main St., Newington, CT 06111
N2MG	Mike Gilmer	315/793-4120	PO Box 4591, Utica, NY 13504
KF2O	Henry J. Kiernan	914/235-4940 914/332-9260	220 Pinebrook Blvd., New Rochelle, NY 10804
K2ONP	George D. Willner	518/279-4025 518/462-7461	88 Bulson Rd., Troy, NY 12180
K2OY	Bruce Robideau	914/677-5717 914/433-5373	PO Box 311, Millbrook, NY 12545
KU2Q	Susan King	914/687-9700 914/385-3688	PO Box 88, Cottekill, NY 12419
WB2Q	Steven King	914/687-9700	PO Box 88, Cottekill, NY 12419
KD2RD	John F. Bagno	516/689-3069	18A Stony Rd., Stony Brook, NY 11790
KZ2S	John Golomb	201/449-3811	107 Bailey Corner Rd., Wall, NJ 07719
W2SC	Tom Georgens	508/634-3078 508/435-1000	3 Chapin Rd., Upton, MA 01568
K2SS	Dave Donnelly	203/393-1287 203/785-4999	40 Brookwood Rd., Bethany, CT 06525
KD2SX	Charles Morrison	401/722-0746	PO Box 9106, Pawtucket, RI 02862
K2TR	Fred Lass	518/355-4813 518/346-6666	RD 1 Box 301, Altamont, NY 12009
WB2UMF	Don Lewine	508/443-2187 508/870-9008	40 MacLean Dr., Sudbury, MA 01776
K2WR	Rich Gelber	212/580-1075 212/456-3675	205 West End Av., New York, NY 10023
NT2X	Edward Kritsky	718/284-4493 212/578-6211	580 E 17th St., Apt. 2F, Brooklyn, NY 11226
K2XA	Saul Abrams	518/439-5700 518/474-7579	RD 1 Maple Rd., Slingerlands, NY 12159
KB2XL	Leo Banigan	516/473-4665 516/473-2128	22 Shenandoah Blvd., Port Jefferson Sta., NY 11776
AA2Z	Mark Wilson	203/267-2179 203/666-1541	229 E. High St., E. Hampton, CT 06424
WB3ANE	Hope Smith	203/521-5086	294 Ridgewood Rd., W. Hartford, CT 06107
W3AZD	Don Search	203/521-5086 203/666-1541	294 Ridgewood Rd., W. Hartford, CT 06107
A13E	Dwight Sipler	508/897-5996 617/861-3045	493 Great Rd., Stow, MA 01775
W3IQS	John W. McBeath	717/689-7557 717/226-6600	Box 394 K-1 RD3, Lake Ariel, PA 18436
KM3T	Dave Pascoe	508/881-8720 617/455-5704	26 Meeting House Path, Ashland, MA 01721
W3WDX	Samuel A. Miller	603/883-2453 617/275-2500	39 Collonwood Dr., Hudson, NH 03051
AK4L	Gerry Hull	603/934-4622 603/228-2340	PO Box 576, Franklin, NH 03235
KB4N	Richard Critz	603/595-7275 508/467-2991	141 Hills Ferry Rd., Nashua, NH 03060
N4XR	Victor Paounoff	203/974-3378	New Sweden Rd., Woodstock, CT 06281
K5NA	Richard King	914/687-9700 914/385-1122	PO Box 88, Cottekill, NY 12419
N6BV	Dean Straw	508/540-4014	70 Fairway Ln., Falmouth, MA 02540
WE6G	Mike Griffin	203/452-7654 203/385-1064	51 Strobel Rd., Trumbull, CT 06611
K6IM	Larry Walter	401/295-8284 401/846-2890	90 Chatworth Rd., N. Kingstown, RI 02852
N18L	Scott Detloff	617/397-8834 603/889-7377	62 Wigglesworth St. #2, Malden, MA 02148
K8LT	Gary Grebus	603/673-8299 508/264-5789	16 N. Mason Rd., Brookline, NH 03033
KC8PE	Bill Hamley	203/272-6001 203/828-4186	722 Yalesville Rd., Cheshire, CT 06410
K8PO	Paul Obert	508/462-3584 603/424-1400	50 Plummer Av., Newburyport, MA 01950
N8RA	Chet Slabinski	203/379-4619 203/678-2334	462 West Hill Rd., New Hartford, CT 06057
W8SWM	Steve Boone	508/533-8769 508/841-3351	15 Diane Dr., Medway, MA 02053
K8UR	Dennis Mitchell	508/529-3146	1 Cider Mill Ln., Upton, MA 01568
K9HI	Phil Temples	617/327-5986 508/967-7900	50 Catherine St., Roslindale, MA 02131
KS9Z	Bruce Makas	207/767-8150 207/283-3611	58 Stonegate Rd., Cape Elizabeth, ME 04107
DL7AEY	Matthias Strelow	508/470-0691	131 Abbot St., Andover, MA 01810

THE CLUB RESOURCES PAGE **THE Place to Find Club Information**

DUES are due at the April election meeting, which begins our club "contest year", with a grace period until the end of June. Membership in the club will lapse at the end of the grace period if dues are not paid up. In order to re-join the club, a lapsed member must attend a meeting, like any new member, and be welcomed back into membership, or may become a subscriber to the **Scuttlebutt** by paying up (see below). Club members who move out of club territory and so are not eligible to contribute to club aggregate scores automatically become subscribers. New members who join at the last meeting of the club's contest year (February) are credited with dues for the following year (that is, the contest year beginning that April). You can tell if you owe dues by checking your **Butt** mailing label. Only paid-up members are eligible to contribute to the the club score in contests.

FAMILY MEMBERS Members of the same family living at the same address may elect to receive only one copy of the **Butt**. One member of the family must pay full dues, enabling the rest of the family to join as family members. Being a family member is currently free.

STUDENT MEMBERS Full-time students are eligible for dues at half the regular rate.

SCUTTLEBUTT SUBSCRIBERS Anyone may subscribe to the club newsletter, the **Scuttlebutt**. A subscription currently costs \$10 per year. At the present time, overseas subscriptions cost the same as domestic (we have very few overseas subscribers). The subscription period begins at the beginning of the club year, in April. New subscribers who begin their subscriptions after the December issue are considered to have paid for the following year (that is, they receive as many issues as new members joining at that time do). You can tell if your subscription is current by checking your **Butt** mailing label. The grace period for late subscriptions is the same as for late memberships.

SCUTTLEBUTT ARTICLES should be sent to the **Scuttlebutt** editor, Paul Young, K1XM, 11 Michigan Drive, Hudson, MA 01749, home phone (508)562-5819. The deadline for each issue is usually three weeks before the next meeting.

CLUB JACKETS are available through Ed Kritsky, NT2X, 580 East 17th Street, Apt. 2F, Brooklyn, NY 11226, home phone (718)284-4493.

CLUB QSL CARDS are ordered through John Dorr, K1AR, 2 Baldwin Street, Windham, NH 03087, home phone (603)434-5661.

CLUB QSL CARD BADGES are available from Tom Frenaye, K1KI, PO Box 386, West Suffield, CT 06093, home phone (203)668-5444, by sending him a club QSL card. The cost is \$1 payable to the club treasurer on receipt of your badge.

PACKET NET information is available from Dick Newell, AK1A, 8 Golden Run Rd., Bolton, MA 01740, home phone (508)779-5198, or Dave Robbins, KY1H, Baumann Road, Peru, MA 01235, home phone (413)655-2714.

CONTEST SCORES are sent to the club scorekeeper, Jeff Detray, NK1F, P. O. Box 524, Troy, NH 03465, home phone (603)242-7995.

CLUB ROSTER appears in the summer issue of the **Scuttlebutt** every year. Updates are published when members move or change call signs. If you want a new copy of the club roster, contact the club secretary/treasurer, Charlotte Richardson, KQ1F, 11 Michigan Drive, Hudson, MA 01749, home phone (508)562-5819.

CONTRIBUTIONS The YCCC welcomes your contributions, be it money to help offset the cost of the **Scuttlebutt** and club operations, scores for the club aggregate score, time spent helping other members, articles for the **Scuttlebutt**, or presentations at club meetings.

DXCC LIST The club maintains a one-page version of the ARRL DXCC Countries List. To get a copy, send an SASE to the club secretary, Charlotte Richardson, KQ1F, 11 Michigan Drive, Hudson, MA 01749. Complete DXCC rules are only available from the ARRL.

ARRL LIAISON For ARRL matters, contact Tom Frenaye, K1KI, PO Box 386, West Suffield, CT 06093, home phone (203)668-5444.

The **Scuttlebutt** is the newsletter of the **Yankee Clipper Contest Club** and is mailed six times per year to all paid up members. Dues are \$15 per year, payable 1 April with a grace period through 30 June. Non-members may subscribe to the **Scuttlebutt** by sending \$10 to the Treasurer: Charlotte Richardson, KQ1F, 11 Michigan Drive, Hudson, MA 01749. Subscribers who subsequently become members will be credited as having paid \$10 towards dues.

The **Scuttlebutt** may be reprinted in whole or in part, except for separately copyrighted articles, provided proper credit is given.

The **Yankee Clipper Contest Club** (an ARRL Affiliated Club) holds six official meetings per year, on the Saturday or Sunday afternoon of the first full weekend of every even month, usually in the Sturbridge, Massachusetts, area. The deadline for article submission to the **Scuttlebutt** is usually three weeks before the next meeting date. The next meeting will be the club summer picnic on Sunday, August 5, 1990. Attendance at an official meeting is required in order to become a member. Club members congregate on 3830 KHz after contests. The packet frequencies are 144.95, 145.69, 144.93, and 144.97 MHz.

Rosters are mailed to all paid members each summer. For more information and/or assistance, contact the area manager nearest you on the following list:

Area	Call	Name	Home	Work
CT/RI	K1RU	Gene Frohman	(203) 393-1772	(203) 386-6137
EMass	N1AU	Bill Santelmann	(617) 862-1753	(508) 692-6000
WMass	KY1H	Dave Robbins	(413) 655-2714	(413) 494-2023
VT/NH	K1GW	Glen Whitehouse	(603) 673-6290	(603) 627-7877
ME	K1SA	Bernie Cohen	(207) 773-6589	(207) 797-3585
NNY	K2TR	Fred Lass	(518) 355-4813	(518) 346-6666
SNY/NJ	K2EK	Bill Gioia	(914) 221-1672	(914) 697-3250

YCCC
11 Michigan Drive
Hudson MA 01749

FIRST CLASS